

E5- HSV29072025



This E5 - HSV APC is built on the chassis of TOYOTA Land Cruiser 79 and provides fast and secure transportation of up to 10 persons. The armor design was developed utilizing extensive experience in development of fully protected armored military and civilian vehicles. The choice of TOYOTA as a base vehicle guarantees availability of the spare parts and service in any part of the world. Modular armor allows selection of appropriate ballistic protection level from BR 6 up to STANAG 3; This level includes all soft-core and armor-piercing bullets 5.45/5.56, 7.62 and 9 mm.



The APC E5 is a 4x4 multi-purpose armored personnel carrier. Highly maneuverable, with 60% gradient and 30% side slope capabilities as well as a high ground clearance of up to 380mm, the APC is equally at home in urban, mountainous and challenging rural terrains and has excellent field reparability. With the capacity to carry up to 10 personnel plus equipment, the APC can be configured for a wide range of missions, including Command and Control, EOD, Patrol, Convoy Support, Forward Observation, Reconnaissance and Medevac.



4x4 APC E5 is provided with 5 Gun Ports.

For its self-protection, 4x4 APC vehicle can be armed with a 7.62- or 12.7 mm machine gun mounted on a rotatable platform on the roof of the vehicle. The gunner can be protected by armor plates on 360°. As all modern military vehicles, a lightweight remotely controlled weapons station can be mounted on the roof of the APC armed with a 7.62 or 12.7mm machine or an automatic grenade launcher. With that type of weapon, the gunner can fire and reload under armor for both weapons while operating with the enemy, a capability that has proved advantageous during combat.



BASE MODEL	MAKE	TOYOTA
	MODEL NAME	LC 70
	GRADE	LC 79 T/DSL - E
	MODEL CODE	VDJ79L-TJMNYV
	BODY TYPE	PICKUP
DIMENSIONS	DIMENSIONS Lx Wx H mm	5245 X 1790 X 1970
	WHEEL BASE mm	3180
	GROUND CLEARANCE mm	282
	MIN. TURNING RADIUS(M)	7.2
	KERB WEIGHT (Kgs)	2160 - 2485
	GROSS VEHICLE WEIGHT (Kgs)	3300
	FUEL TANK CAPACITY Ltrs.	90 + 90
ENGINE & DRIVETRAIN	DISPLACEMENT cc	2800
	HP / RPM ISO Net	201/3400
	TORQUE KgM/RPM ISO Net	500 Nm at 1600-2800 RPM
	TYPE	V4
	FUEL SYSTEM	COMMON RAIL
	FUEL TYPE	DIESEL
	T/M	6-SPEED AT
	EURO EMISSION CERT.	EURO 0
	4WD OPTIONS	FULL TIME
	DIFF. OPTION	WITHOUT
STEERING	POWER/TILT	WITH/WITH
	TELESCOPIC	WITH

4X4 APC is motorized with a TOYOTA 2.8L V4, 4 cylinders developing 201 hp coupled to an TOYOTA MANUAL 5 SPEED TRANSMISSION with four stages forward and one reverse, neutral and parking APC USES INDEPENDENT SUSPENSION AXLE SYSTEM WITH STATIC LOAD OF 3500 KG IN FRONT AND 4000 KG IN REAR . system consists of COIL springs and HYDRAULIC DAMPER. It can run at a maximum road speed of 120 km/hr. with a maximum cruising range of 600 km. The vehicle is able to negotiate side slopes up to 30%, gradient up to 60 % and to cross water obstacle of 1.0m depth.



The APC features an Agile Aerodynamic Body for Stealth Operations. Armor of the APC consists of all welded ballistic grade steel construction. Opaque and transparent five sided armoring of personnel compartment to provide protection against 7.62X51, 7,62 mm x 39 API BZ, 5,56 x 45 M193, 5,56 x 45 SS109 NATO, 7,62 x 51 NATO Ball ammunition. The vehicle can be fitted with add-on armor to reach a protection Level 2 STANAG 4569. The interior frame, constructed of ballistic grade steel, provides overlap and backup protection for the large-surface principal impact areas such as the doors and windows. It also reinforces the structural integrity of the support pillars and other areas that are crucial to maintaining vehicle safety in any circumstance, including rollover and ramming situations. Vehicle armoring has been constructed in such a way as to ensure that a projectile following a linear or angled path shall not enter the vehicle's interior without contacting the armor material. In addition to this, the possibility of a projectile entering the vehicle's interior due to a ricochet from the armor shall also be minimized. The APC has total of 3 doors: driver's front door, commander's front door and rear door for personnel access. ONE hatch is mounted on the top of the hull. The latter is hinged door, which is specifically designed to ensure fast embarkation and disembarkation of personnel. Each side of the vehicle is equipped with TWO small bullet-proof windows. Driver and commander are seated at the front of the vehicle, each seat with special 4-point belts. The rear passenger cabin can accommodate SIX to EIGHT personnel and is provided with special 4-point belts with no hard link to the floor and connected to the ceiling through the special energy absorbing suspension*.

MILITARY GRADE SUSPENSION SYSTEM

The standard original suspension system will be completely replaced with an engineered-for-purpose high performance suspension system providing constant loading. Front and rear shock absorbers from a high-quality manufacturer of sufficient design to prevent fluid from boiling, front and rear springs will be installed. Suspension turrets and anchoring points will be strengthened and reinforced to enable the additional load



UPGRADED STEERING DAMPER AND SUMP PROTECTION

Upgraded steering dampers, from a high-quality manufacturer will be installed. Steel protection plates will be installed to protect the underside of the engine and steering components in the event the vehicle crosses a central lane divider or extremely rough ground. These must be easily removable for the purposes of vehicle maintenance





4x4 APC is featuring 12V electrical system. There are FIVE dual-mode interior dome lamps installed: 4 in personnel compartment and 1 in commanders' cabin. Dome lamps are featuring special illumination mode when light beam is not reaching the body glass of the vehicle thus preventing violation of camouflage of the vehicle. Illumination level of working zone of interior in this mode is 5-7 lx.

CABIN PROTECTION

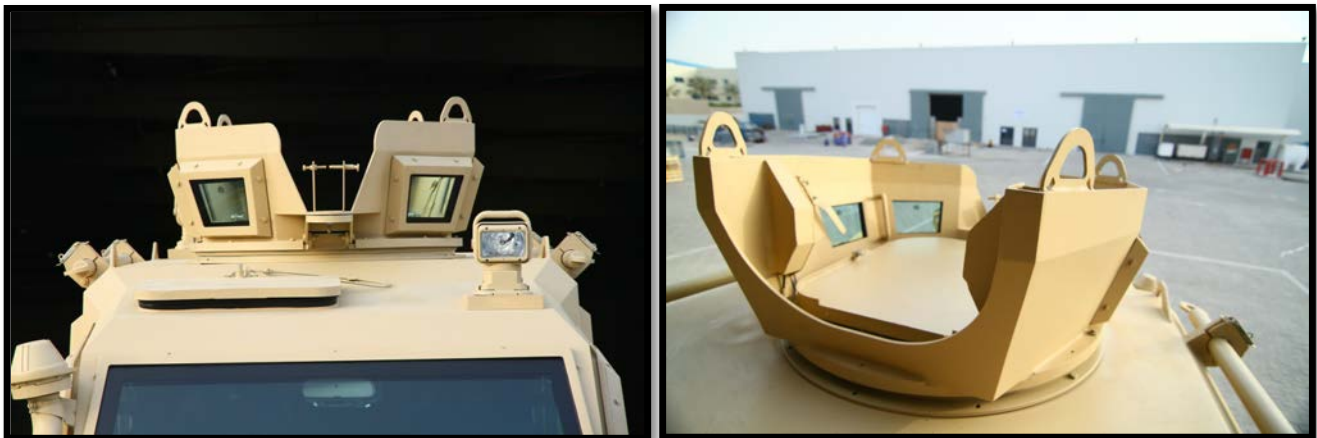
The passenger cabin will be well protected according to protection level BR6 including all sidewalls, doors, pillars, roof, floor, front, bulkhead, and rear door.

Edges and seams are armored by utilizing an overlap design system which minimizes gaps and preventing penetration.

The ballistic steel panels are covered with cathodic dip painting before installation.

The main armor shell provides overlap for all the secondary armor components such as the doors and the windows, roof hatches, gun-ports etc.

TRAVERSING CROWN TURRET



Vehicle will be equipped with 360 degree traversing crown turret with universal g goose-neck female gun mount with capability to mount most modern weaponry inclusive of EKM DShk, .50 CAL.BMG, M60 etc. Gun mount is easily replaceable and upgradeable. The turret is equipped with an all-round -locking mechanism that stabilizes the turret in any direction the gunner desires. The Hatch of the gunner turret will be equipped with cushioning in order for the soldier to rest his back on it during down time. The hatch will have heavy duty restraints preventing it from closing closing will driving, breaking and in case of minor collisions. The crown of the turret will have minimum 2 maximum 4 viewing ports equipped with quarter panels of transparent armor.

ROOF ESCAPE HATCH

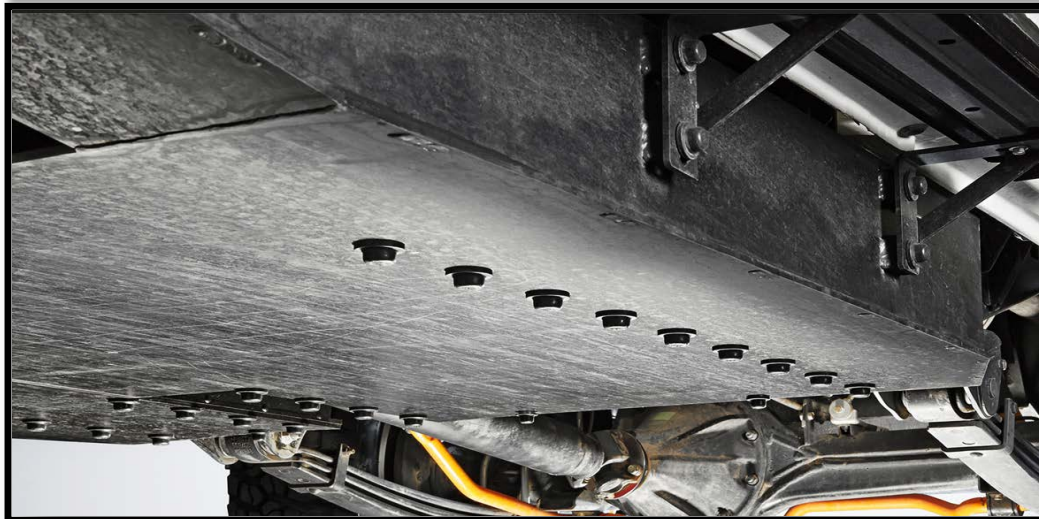
A ballistic steel roof hatch, to a minimum level-B6, will be installed with access from both inside and outside the vehicle. The locking lever of the escape hatch is to be spring mounted allowing the escape of gasses and the shockwave usually generated by an IED or similar explosive device. The aperture of the escape hatch will be large enough to allow unhindered passage during escape by a Large to Extra-Large person wearing a ballistic vest.



WIRE MESH GLASS PROTECTION

Removable gauge welded Wire Mesh Protection for all transparent Areas. It prevents breakings from riot or eliminates any security threats towards the glass. Custom made to fit TLC79 side windows and windshield . Aesthetically pleasing finishes. Wire Mesh Guard is the most protective product used for transparent area security against possible attacks.

- 10 gauge Strong Wire mesh
- Welded on each Intersection to provide strong security
- Each Panel has tabs on both side to fasten to window frame
- Angle or tubular framing for Recess mount



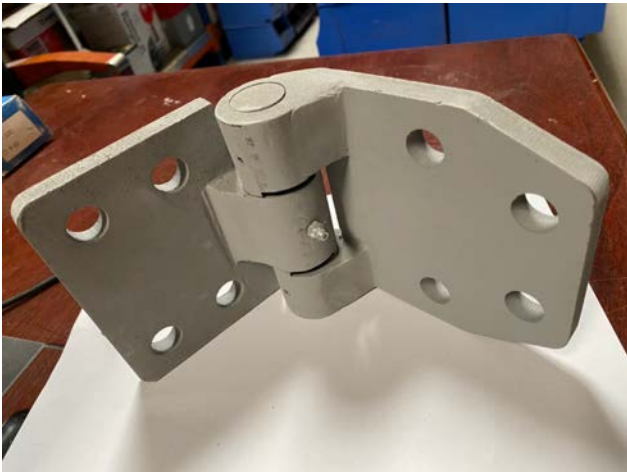
FUEL TANK PROTECTION

All fuel tanks and fuel pipes will be armored using blast steel to combat ballistic and fragmentation attacks. Fuel line hoses will also be protected against blast and projectiles. All welded joints produced using a special welding technique limiting the heat-transfer to the armour steel around the weld, and covered with non-heat-affected overlaps.

REINFORCED HINGES / DOORS

All doors are connected with engineered-for-purpose heavy-duty type hinges capable of sustained functioning of the heavier armored doors. All door pillars are specially reinforced to prevent distortion caused by the additional weight of the doors.

Door check straps will be fitted to all doors to prevent doors from reaching full articulation. All internal door panels will be fitted with reinforced robust grab handles adequately secured to enable sustained opening and closing of the heavier armored door and fitted with manual "Battle Lock" deadbolts



AUXILIARY AIR CONDITION SYSTEM

An additional air condition system will be installed for the rear passenger compartment. The HVAC system will provide variable controlled ducting and ventilation for both front and rear passenger compartments. This includes upgraded condensers and evaporators. Separate blower with control unit for the rear passengers.



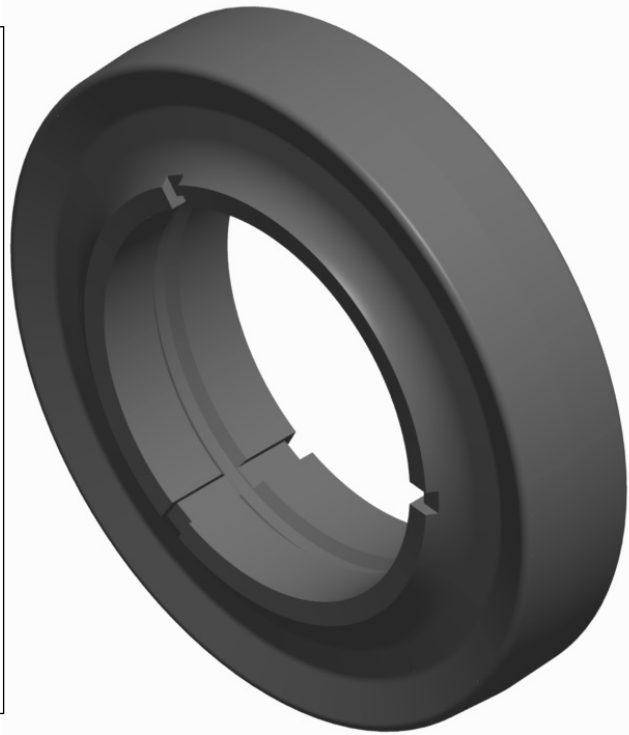
HUTCHINSON COMPOSITE RUN FLAT DEVICES ON ALL WHEELS

Flat-proofing protection for armored vehicles.

The Hutchinson composite run flat is a reinforced polymer device designed to provide flat tire mobility when used with pneumatic tires. Hutchinson CRF products are specified on numerous government and security vehicles, where flat tire mobility is critical. The Hutchinson CRF is standard equipment used by Armored Vehicle Builders.

High Standards of Performance

- CRF runflat devices are designed to U.S. Army, NATO/FINABEL speed & distance standards of 50 km at 50 km/hr.
- Each CRF is custom designed to fit the specific drop center profile of the wheel, maximizing the support of the runflat and assuring proper fitment.
- CRFs are designed to reduce both tire and wheel damage by supporting the wheel off the tire.
- CRF components are custom built to meet the specific load rating criteria and distance requirements of each project.



Tire Design

1 3-2 INNER TREAD RIBS

Unique hybrid 3-2 tread pattern reduces noise and increases stability.

2 ALTERNATING SHOULDER LUGS

Enhance traction in mud and soft surfaces.



3 ANTI STONE RETENTION

Resists stone retention which helps to increase the life of the tire.

4 MUD RELEASE DIMPLES

Aid in keeping the tread pattern free of loose soil.

MOSS ACCESSORRIES ON REQUEST:

1. Electric Winch 12 volt fixed in the heavy duty front bull bar (12,000LBS)
2. Heavy Duty Jack (4,000kgs)
3. Bulb Fuse Kit
4. 2 jerry cans (20L) and two funnels with twin holders
5. Wheel Wrench X-Type, 17,19,21 (13/16) 22mm
6. One nylon snatch strap with reinforced loops at each end, minimum of 8m length with a minimum capacity of 4 tons
7. Two large U-bolts of a minimum capacity of 2,5 tons
8. Blackhawk Sledgehammer, hooligan bar required for emergency entry
9. Heavy Duty Jump Leads
10. Winch Recovery Accessories in Storage Bag
11. Pintle Hook
12. Fog lamps, 2 x 100W -Front
13. Fog lamps 2x55W - Rear
14. Strobe Lights Front and Rear
15. Taillight kill switch
16. Advanced First Aid Kit
17. Rechargeable torch light
18. Essential Tool Kit (OEM tools)
19. Shovel with Handle
20. One handheld 1 kg fire extinguisher securely mounted in the front forward passenger foot-well
21. One handheld 1 kg fire extinguisher to be securely mounted (internally) to the right rear cargo door

A self-recovery winch is mounted at the front of the vehicle. The APC is equipped with, independent air conditioner. Two exhaust fans, controlled from a switch located in the driver compartment, have been mounted in the rear of the vehicle in order to provide additional heat dissipation from the interior, as well as easily remove any smoke and/or other airborne chemicals which may be present inside the operational area of the vehicle. A central tire inflation system is available on the APC controlled from the cabin. In option, the APC can be equipped with video surveillance and monitoring systems, additional lights, automatic and manual fire suppression system, telescopic mast, public address and siren system, radio communication equipment, GPS and tracking service, LED police light bar, blackout lighting compatible NATO STANAG-4381, and NATO type external jumper socket.

4 camera - SURVEILANCE SYSTEM (OPTIONAL)

Four cameras with resolution 1080 HD, HD Monitor with recording capacity up to 48 hours (2TB):

- One mounted in front with wide view of the front road;
- One mounted in the back with wide view of the rear;
- One with wide view, mounted in the front upper corner, above the windshield, in front of passenger seat with view of the passenger, driver and back seats;
- One mounted with view on the outside the driver's window, i.e. to record anyone approaching the driver.



HANDHELD FIRE EXTINGUISHERS (for All Vehicles)

One handheld 1 kg fire extinguisher securely mounted in the front forward passenger footwell.

One handheld 1 kg fire extinguisher to be securely mounted (internally) to the right rear cargo door

PUBLIC ADDRESSING SYSTEM

A siren, intercom and public address system, of European manufacture, will be installed with switching and handset located in the front compartment in such a way as to enable equal ease of operation by both the driver and the front passenger who is usually a security officer and will usually operate this equipment.



STROBE LIGHTS PACKAGE



4x flashing BLUE/RED Strobe Lights integrated in Front grille.

2x flashing BLUE/RED Strobe Lights integrated in back door left and right incl. separate controls button

white flash-light integrated in Front fog light

APC SEATING:

4X4 APC: 2+6 = 8.

Seats for personnel have no hard link to the floor and fixed to the walls of the rear capsule.

All personnel seats are equipped with special 4-point seat belts and foot rests

Internal space of personnel compartment is sufficient for evacuation of wounded personnel & additional Cargo



PICTURES FOR REFERENCE

DELIVERY TERMS:

VEHICLE ORDER	MANUFACTURING LOCATION	MANUFACTURING DATE	COMPLETION & DELIVERY
10	UAE	EX STOCK	EX STOCK

We can produce 30 units in 120 Days

PAYMENT TERMS:

- Down Payment: 80% after signature of the contract.
- Balance Payment: 20% Prior to Shipping.

COMMERCIAL OFFER – APC LC-79 2.8Ltr Diesel V4 Cylinder TWIN TURBO						
No.	ITEM DESCRIPTION	COO	QTY	UNIT	EXW RATE	EXW TOTAL
1	BR6 Level of Armoring - According to CEN 1063, APC LC-79 2.8Ltr Diesel V4 Cylinder TWIN TURBO – 2025YM	UAE	1	UNIT	USD225,000	USD225,000
SHIPPING / FREIGHT CHARGES						
2	Shipping Charges			1 Unit		TBD

The manufacturer warrants any armor related items installed, and conversion related custom workmanship, including transparent armor*, for the period of 1 year or 20,000km, whichever comes first. Any suspected warranty related work must first be confirmed as being necessary by means of technical consultation with a representative of the manufacturer.





INTERIOR PICTURES:





PICTURES FOR REFERENCE ONLY