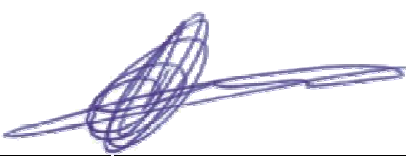



126, Triq Guze Pesci, Iklin BZN 11, Malta.
Tel:=(356) 2143 5660, +(356) 9942 9177

Ship's name:	Barge 231A
IMO number:	Not Applicable
Class identity number:	Not Applicable
Port of Registry:	Freetown
Gross tons:	
Deadweight:	
Date of build:	
Classification society:	Lloyds Register of Shipping

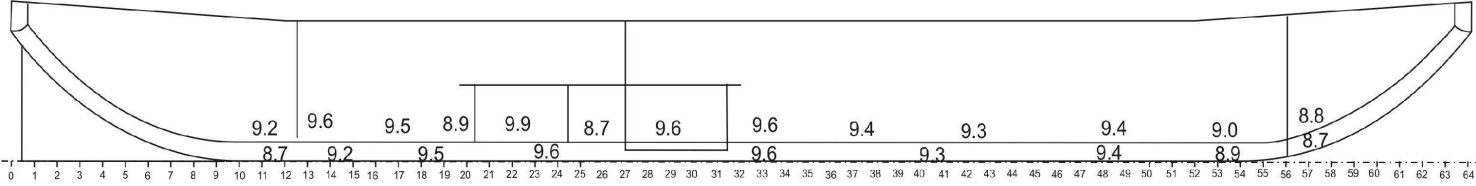
Name of Company performing thickness measurement:		AMD Inspection Services
Thickness measurement company certified by:		Lloyds Register of Shipping
Certificate No.		MNDE/2016/7149
Certificate Valid From:	17-Jan-16	to: 17-Jan-19
Place of measurement:		Malta
First date of measurement:	04-Mar-16	Last date of measurement: 04-Mar-16
Special Syrvey IV - Due:		
Details of measurement equipment:		
KRAUTKRAMER DM4 DL		
Verification of the instrument(s) by the attending class surveyor		N/A
Qualification of operator:		
A.S.N.T. L.III, P.C.N. Level II		

Report Number:	AMD/10/10	consisting of	7	Sheets
----------------	-----------	---------------	---	--------

Name of operator:		J.Cremona
Signature of operator:		Company official stamp:
		
Name of Surveyor:		N/A
Signature of surveyor:		Classification Society Official Stamp:



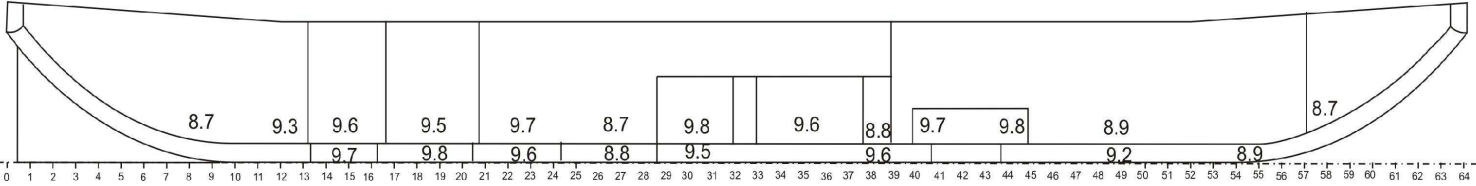
126 Triq Guze Pesci, Iklin, BZN 11, Malta.
 Tel: (+356) 21 435 660, (+356) 9942 9177
 Fax: (+356) 21 435 660
 email: cremj@maltanet.net



Port

8.5	8.7	8.8	9.0	8.6	8.7	8.8	8.6	8.6
8.8	8.9	8.7	8.8	9.0	8.9	8.6	8.9	8.9
9.5	9.2	9.4	8.9	9.5	9.2	9.3	8.9	9.2
9.5	9.3	9.0	9.2	9.4	9.2	9.1	8.9	9.3
9.2	9.3	8.9	8.7	9.3	9.0	9.5	9.3	9.4
9.6	9.2	9.0	9.3	9.6	9.4	9.0	9.1	9.2
8.9	9.2	9.3	9.0	9.7	9.2	8.7	9.2	9.2
9.3	9.6	9.5	9.2	9.6	8.9	9.2	9.3	9.3
8.9	9.2	8.8	8.9	9.4	9.4	9.5	9.3	9.1
8.6	9.2	9.0	9.2	8.7	9.2	8.8	8.8	9.1
8.9	9.2	8.8	8.9	9.4	9.5	9.3	9.3	9.1

Stbd




Non Destructive Testing Report	JOB ULTRASONIC THICKNESS GAUGING	CONTRACT No.: N/A		CLIENT: VPJ Ltd	
		REPORT No.: AMD10/10			
VESSEL Barge 231A	ITEM: BOTTOM & SIDE PLATING (during drydocking and after hull cleaning)	PROCEDURE: WP/UT/01		QD/UT 04	SHEET No. 2
		Date 04-Mar-16			

Report on THICKNESS MEASUREMENT OF MISCELLANEOUS STRUCTURAL MEMBERS

SHIP'S NAME: **Barge 231A**

CLASS IDENTITY No. **Not Applicable**

REPORT No: **AMD/10/10**



126, Triq Guze Pesci, Iklin BZN 11, Malta.
Tel:=(356) 2143 5660, +(356) 9942 9177

STRUCTURAL MEMBER : **Bottom Plating**

DESCRIPTION	Thk.	GAUGED				Diminution		Diminution		Maximum Allowable Diminution mm
		P	S	Port	Stbd	Port		Stbd		
						mm	%	mm	%	
2nd Forward Strake Fwd	10.0	8.6	9.1	1.4	14.0	0.9	9.0			
2nd Forward Strake Fwd	10.0	9.2	8.8	0.8	8.0	1.2	12.0			
2nd Forward Strake Aft	10.0	8.9	9.1	1.1	11.0	0.9	9.0			
2nd Forward Strake Aft	10.0	9.2	9.3	0.8	8.0	0.7	7.0			
1st Forward Strake Fwd	10.0	9.3	9.3	0.7	7.0	0.7	7.0			
1st Forward Strake Fwd	10.0	9.6	9.3	0.4	4.0	0.7	7.0			
1st Forward Strake Aft	10.0	8.9	9.2	1.1	11.0	0.8	8.0			
1st Forward Strake Aft	10.0	9.2	9.2	0.8	8.0	0.8	8.0			
Midship Strake Fwd	10.0	9.6	9.2	0.4	4.0	0.8	8.0			
Midship Strake Fwd	10.0	9.2	9.1	0.8	8.0	0.9	9.0			
Midship Strake Aft	10.0	9.2	9.4	0.8	8.0	0.6	6.0			
Midship Strake Aft	10.0	9.3	9.3	0.7	7.0	0.7	7.0			
1st Aft Strake Fwd	10.0	9.5	9.3	0.5	5.0	0.7	7.0			
1st Aft Strake Fwd	10.0	9.3	8.9	0.7	7.0	1.1	11.0			
1st Aft Strake Aft	10.0	9.5	9.2	0.5	5.0	0.8	8.0			
1st Aft Strake Aft	10.0	9.2	8.9	0.8	8.0	1.1	11.0			
2nd Aft Strake Fwd	10.0	8.8	8.9	1.2	12.0	1.1	11.0			
2nd Aft Strake Fwd	10.0	8.9	8.6	1.1	11.0	1.4	14.0			
2nd Aft Strake Aft	10.0	8.5	8.6	1.5	15.0	1.4	14.0			
2nd Aft Strake Aft	10.0	8.7	8.8	1.3	13.0	1.2	12.0			

Operator's Signature
J.Cremona

Surveyor's Signature
N/A

Report on THICKNESS MEASUREMENT OF MISCELLANEOUS STRUCTURAL MEMBERS

SHIP'S NAME: **Barge 231A**

CLASS IDENTITY No. **Not Applicable**

REPORT No: **AMD/10/10**

STRUCTURAL MEMBER : **Bottom Plating**

LOCATION OF STRUCTURE : **1st Inboard Strake**

DESCRIPTION	Thk.	GAUGED		Diminution		Diminution		Maximum Allowable Diminution mm
		P	S	Port		Stbd		
				mm	%	mm	%	
2nd Forward Strake Fwd	10.0	9.0	9.2	1.0	10.0	0.8	8.0	
2nd Forward Strake Fwd	10.0	9.2	8.7	0.8	8.0	1.3	13.0	
2nd Forward Strake Aft	10.0	88.0	9.5	0.0	0.0	0.5	5.0	
2nd Forward Strake Aft	10.0	8.9	9.4	1.1	11.0	0.6	6.0	
1st Forward Strake Fwd	10.0	9.5	9.2	0.5	5.0	0.8	8.0	
1st Forward Strake Fwd	10.0	9.2	8.9	0.8	8.0	1.1	11.0	
1st Forward Strake Aft	10.0	9.3	8.7	0.7	7.0	1.3	13.0	
1st Forward Strake Aft	10.0	9.0	9.2	1.0	10.0	0.8	8.0	
Midship Strake Fwd	10.0	9.0	9.0	1.0	10.0	1.0	10.0	
Midship Strake Fwd	10.0	9.3	9.4	0.7	7.0	0.6	6.0	
Midship Strake Aft	10.0	8.9	9.5	1.1	11.0	0.5	5.0	
Midship Strake Aft	10.0	8.7	9.0	1.3	13.0	1.0	10.0	
1st Aft Strake Fwd	10.0	9.0	9.1	1.0	10.0	0.9	9.0	
1st Aft Strake Fwd	10.0	9.2	9.2	0.8	8.0	0.8	8.0	
1st Aft Strake Aft	10.0	9.4	9.3	0.6	6.0	0.7	7.0	
1st Aft Strake Aft	10.0	8.9	9.2	1.1	11.0	0.8	8.0	
2nd Aft Strake Fwd	10.0	8.7	8.9	1.3	13.0	1.1	11.0	
2nd Aft Strake Fwd	10.0	8.8	9.0	1.2	12.0	1.0	10.0	
2nd Aft Strake Aft	10.0	8.8	8.7	1.2	12.0	1.3	13.0	
2nd Aft Strake Aft	10.0	9.0	8.6	1.0	10.0	1.4	14.0	



126, Triq Guze Pesci, Iklin BZN 11, Malta.
Tel:=(356) 2143 5660, +(356) 9942 9177

Operator's Signature
J.Cremona

Surveyor's Signature
N/A

Report on THICKNESS MEASUREMENT OF MISCELLANEOUS STRUCTURAL MEMBERS

SHIP'S NAME: **Barge 231A**

CLASS IDENTITY No. **Not Applicable**

REPORT No: **AMD/10/10**



126, Triq Guze Pesci, Iklin BZN 11, Malta.
Tel:=(356) 2143 5660, +(356) 9942 9177

STRUCTURAL MEMBER : Bottom Plating

LOCATION OF STRUCTURE : Centre Strake

DESCRIPTION	Thk.	GAUGED			Diminution Port		Diminution Stbd		Maximum Allowable Diminution mm
		P	S	mm	%	mm	%		
1st Forward Strake Fwd	10.0	9.6		0.4	4.0				
1st Forward Strake Aft	10.0	9.7		0.3	3.0				
MidshipStrake Fwd	10.0	9.6		0.4	4.0				
MidshipStrake Aft	10.0	9.3		0.7	7.0				
1st Aft Strake Fwd	10.0	9.4		0.6	6.0				
1st Aft Strake Aft	10.0	9.3		0.8	7.5				

Operator's Signature
J.Cremona

Surveyor's Signature
N/A

AMD INSPECTION SERVICES

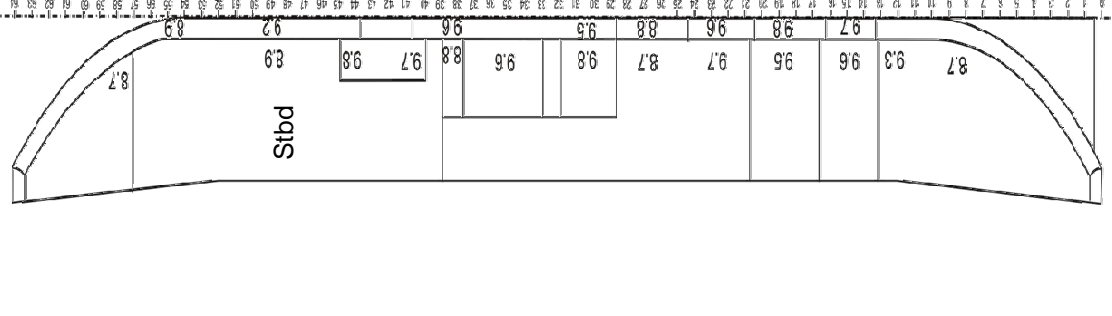
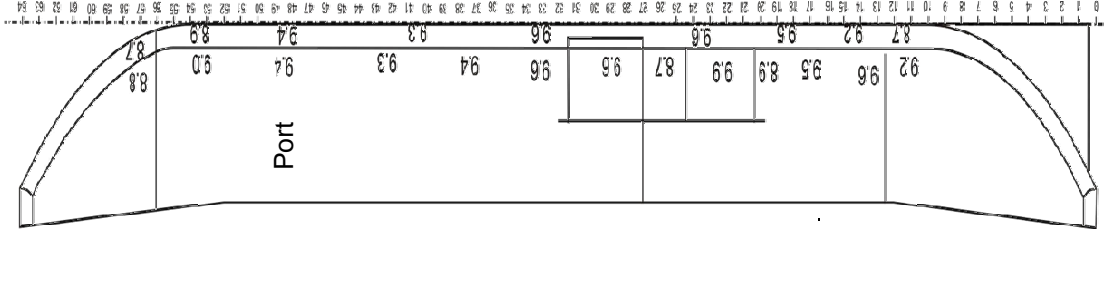
126, Triq Guze Pesci, Iklin BZN 11, Malta.
Tel:=(356) 2143 5660, +(356) 9942 9177

SHIP'S NAME: **Barge 231A** CLASS IDENTITY No. **Not Applicable** REPORT No: **AMD/10/10**

STRUCTURAL MEMBER : Side shell Plating

LOCATION OF STRUCTURE : 1st Inboard Strake

DESCRIPTION	Thk.	GAUGED		Diminution		Diminution		Maximum Allowable Diminution mm
		P	S	Port	Stbd	Stbd		
						mm	%	
Side shell lower area Fwd	10.0	8.8	8.7	1.2	12.0	1.3	13.0	
Side shell lower area	10.0	9.0	8.9	1.0	10.0	1.1	11.0	
Side shell lower area	10.0	9.4	9.8	0.6	6.0	0.2	2.0	
Side shell lower area	10.0	9.3	9.7	0.7	7.0	0.3	3.0	
Side shell lower area	10.0	9.4	8.8	0.6	6.0	1.2	12.0	
Side shell lower area	10.0	9.6	9.6	0.4	4.0	0.4	4.0	
Side shell lower area	10.0	9.6	9.8	0.4	4.0	0.2	2.0	
Side shell lower area	10.0	87.0	8.7	0.0	0.0	1.3	13.0	
Side shell lower area	10.0	9.9	9.7	0.1	1.0	0.3	3.0	
Side shell lower area	10.0	8.9	9.5	1.1	11.0	0.5	5.0	
Side shell lower area	10.0	9.5	9.6	0.5	5.0	0.4	4.0	
Side shell lower area	10.0	9.6	9.3	0.4	4.0	0.7	7.0	
Side shell lower area Aft	10.0	9.2	8.7	0.8	8.0	1.3	13.0	



Operator's Signature
J.Cremona

Surveyor's Signature
N/A

SHIP'S NAME: **Barge 231A** CLASS IDENTITY No. **Not Applicable** REPORT No: **AMD/10/10**

STRUCTURAL MEMBER : Rounded Bottom Plating

LOCATION OF STRUCTURE : 1st Inboard Strake

DESCRIPTION	Thk.	GAUGED		Diminution		Diminution		Maximum Allowable Diminution mm
		P	S	Port	Stbd	mm	%	
Bottom rounded plate Fwd	10.0	8.7	8.9	1.3	13.0	1.1	11.0	
Bottom rounded plate	10.0	8.9	9.2	1.1	11.0	0.8	8.0	
Bottom rounded plate	10.0	9.4	9.6	0.6	6.0	0.4	4.0	
Bottom rounded plate	10.0	9.3	9.5	0.7	7.0	0.5	5.0	
Bottom rounded plate	10.0	9.6	8.8	0.4	4.0	1.2	12.0	
Bottom rounded plate	10.0	9.6	9.6	0.4	4.0	0.4	4.0	
Bottom rounded plate	10.0	9.5	9.8	0.5	5.0	0.2	2.0	
Bottom rounded plate	10.0	9.2	9.7	0.8	8.0	0.3	3.0	
Bottom rounded plate Aft	10.0	8.7		1.3	13.0			

