

TM2500 & TM2500+

Mobile Gas Turbine Generator



Product Description

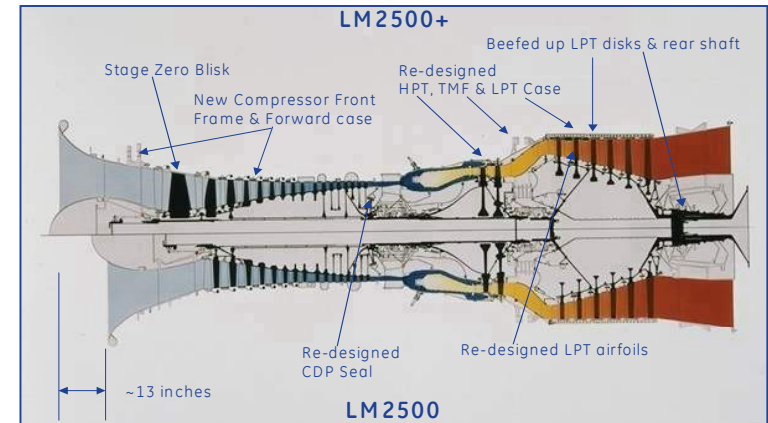
- 23-31 MW mobile gas turbine generator
- Easily transported by land, air, or sea
- 50 or 60 Hz flexibility
- Liquid or natural gas fuel
- Low emissions (25 ppm NO_x)
- Low noise – 88 dBA



What's Inside?

GE LM2500/+ Gas Turbine

- 2,000+ engines worldwide
- More than 97M operating hrs
- Recognized as the industry leader in its size class



Brush Electrical Generator

- Air-cooled generator w/ brushless excitation
- Suitable for Class 1, Group D, Div. 2 areas
- 60 and 50 Hz operation
- Rated at 32,550 KVA @ 0.90 pf, 59 deg. F cooling air, 13.8 kV, 60 Hz. (11.5 kV @ 50 Hz.)

Pictures of the TM2500+ (2010)

Generator Side



Control Room Side



Inlet & Exhaust



Inlet & Exhaust



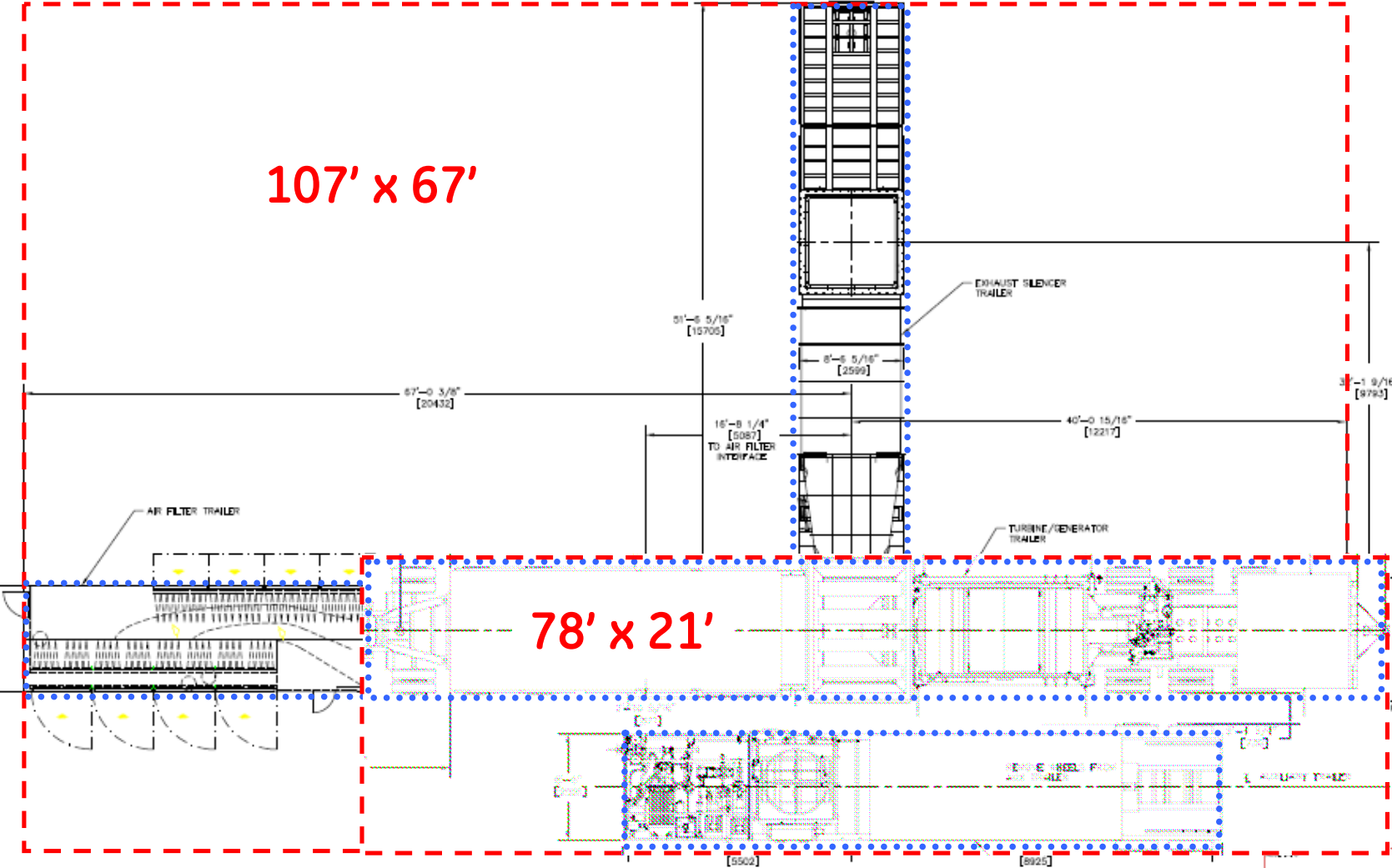
Switchgear & Generator



Raised View

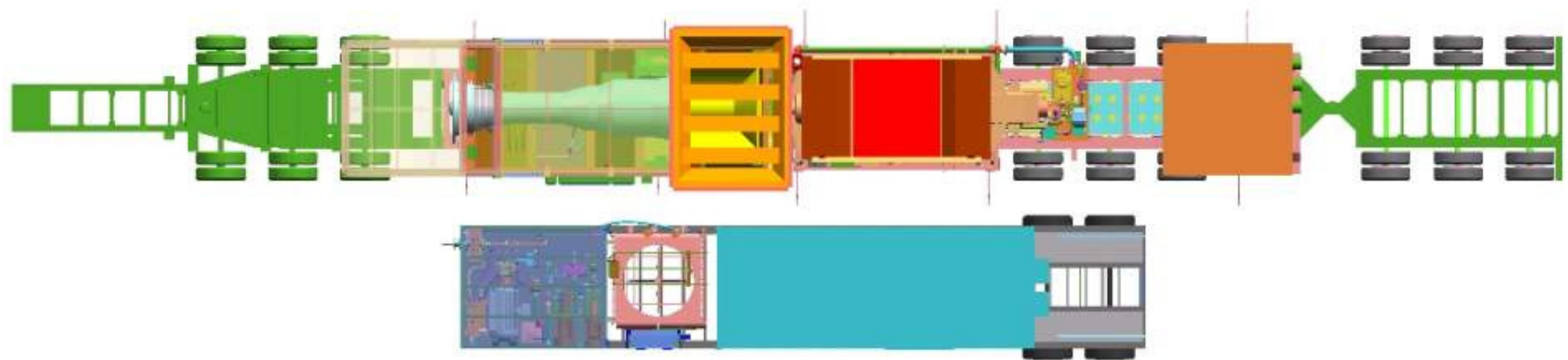
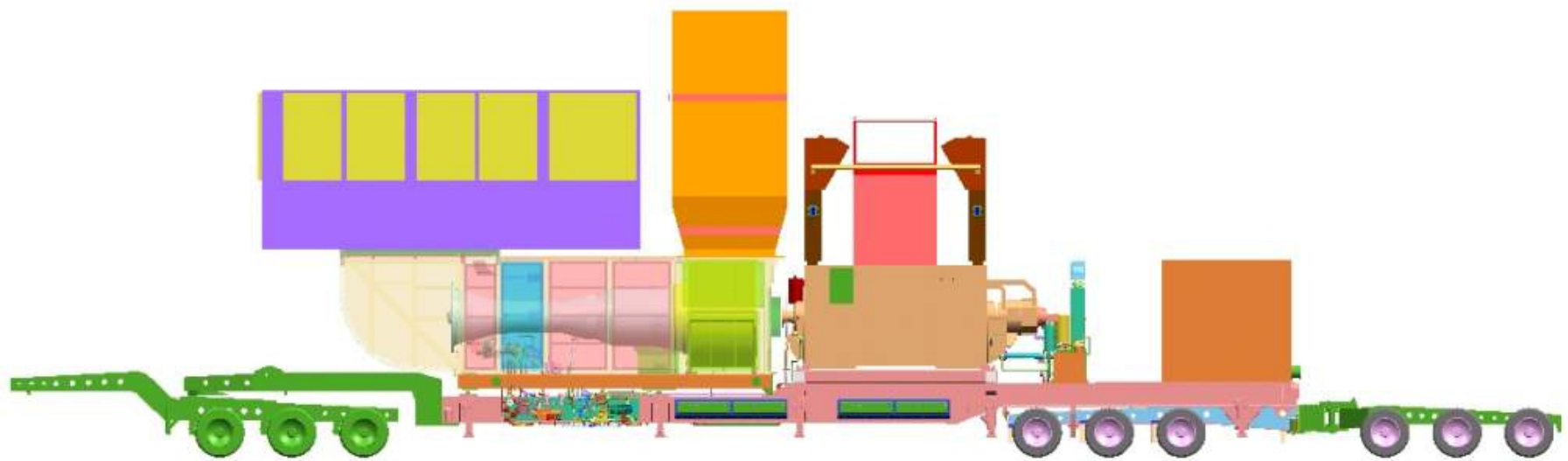


TM2500/+ Footprint



77% Reduction in Installed Footprint

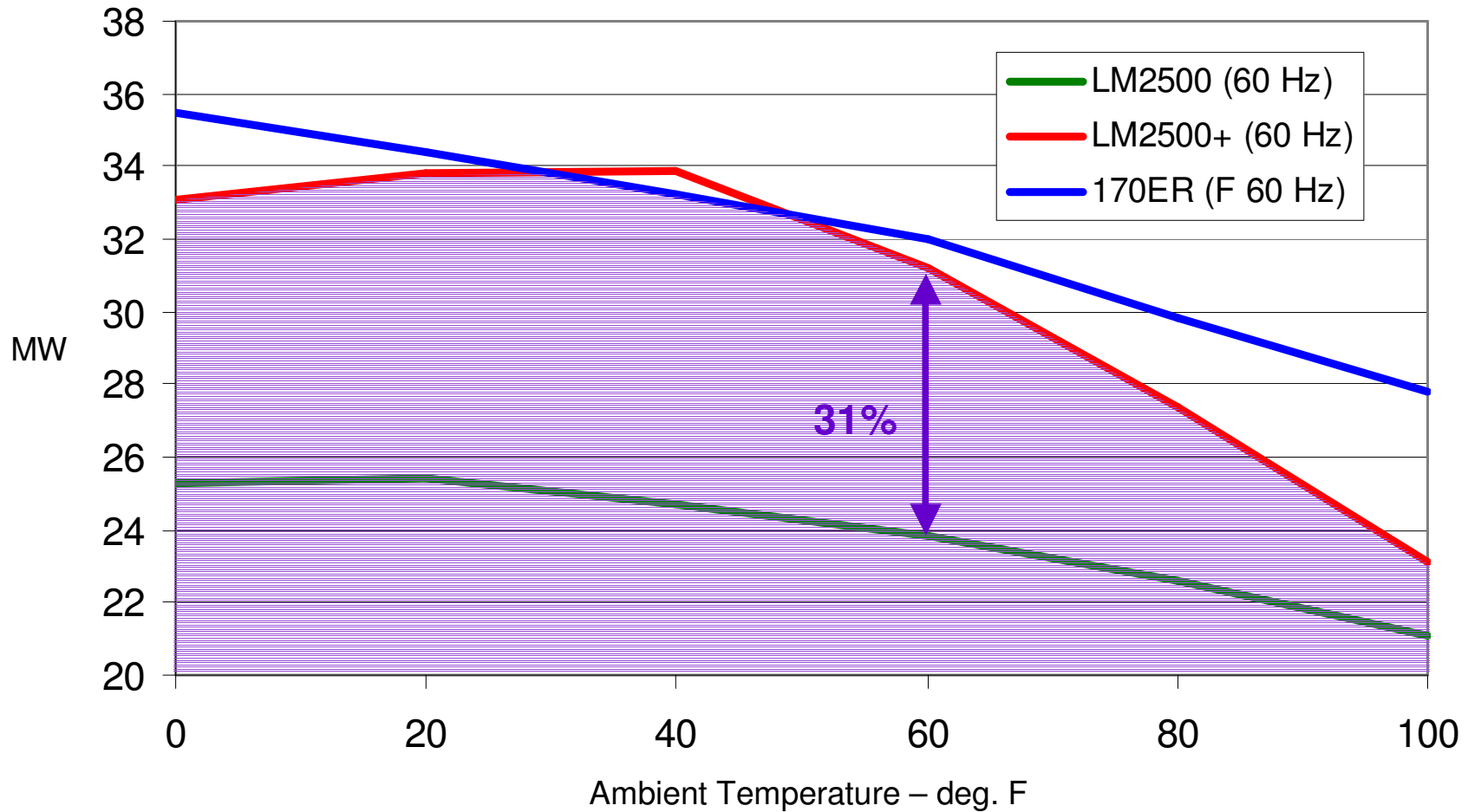
Introducing the TM2500+



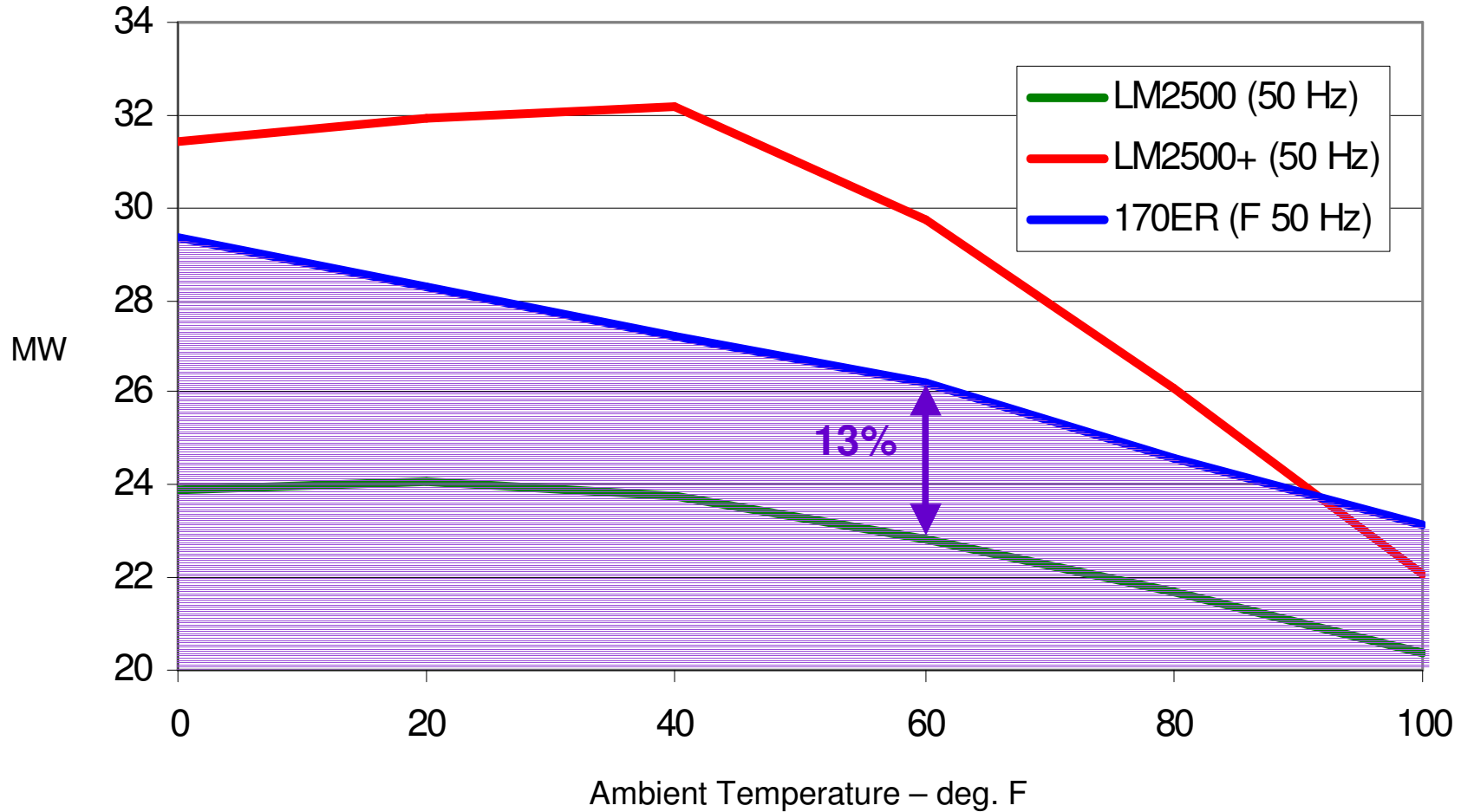
What's New?

- **LM2500 PLUS gas turbine**
 - **Up to 30% more power!**
- Two-trailer design
 - 75% reduction in footprint
- Improved interconnection design
 - Faster installation and set-up

31% More Power at 60 Hz !



13% More Power at 50 Hz !



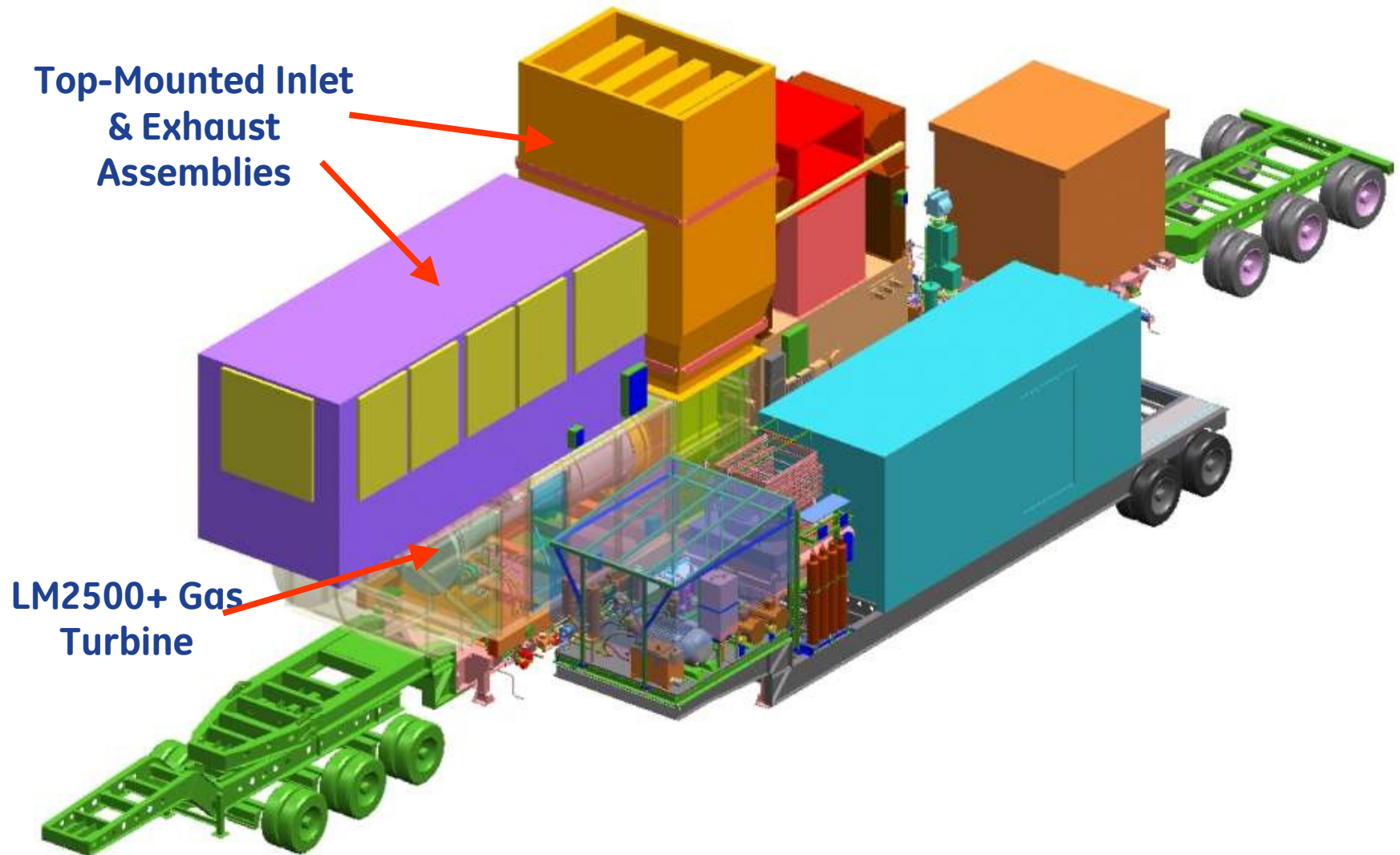
50 Hz Performance

GE Proprietary and Confidential

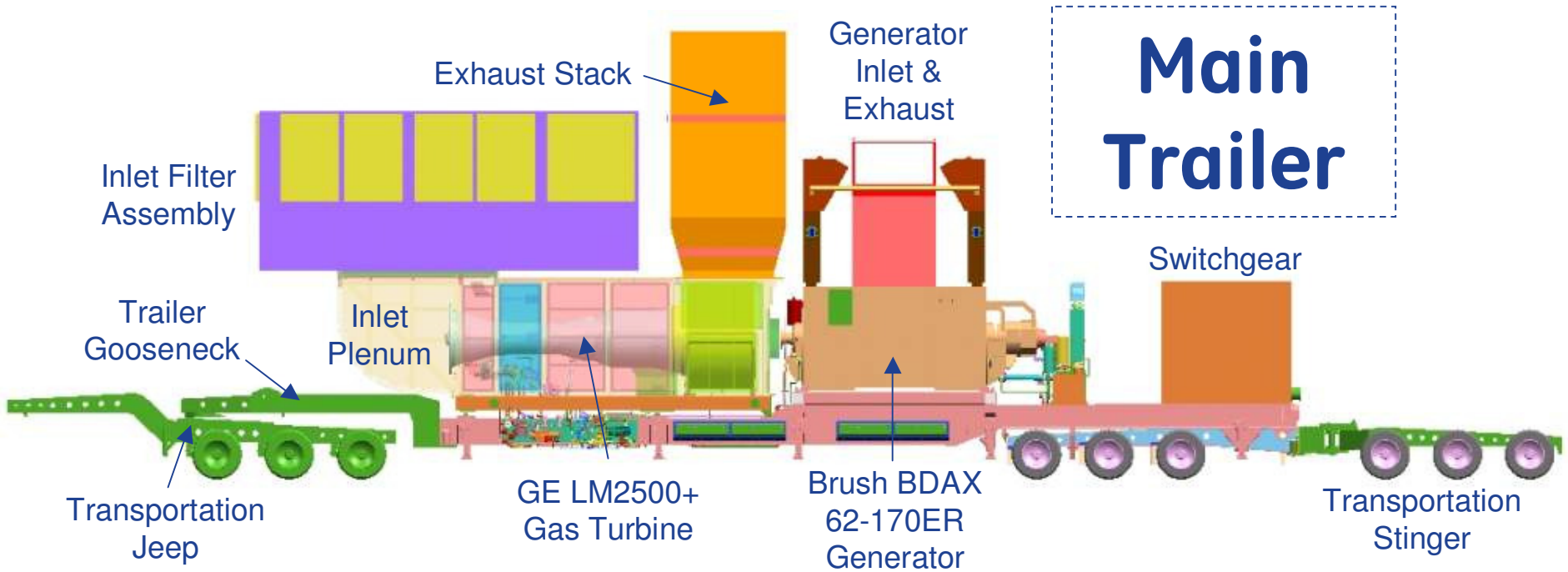
What's New?

- LM2500 PLUS gas turbine
 - Up to 31% more power!
- **Two-trailer design**
 - **Smaller footprint**
- Improved interconnection design
 - Faster installation and set-up

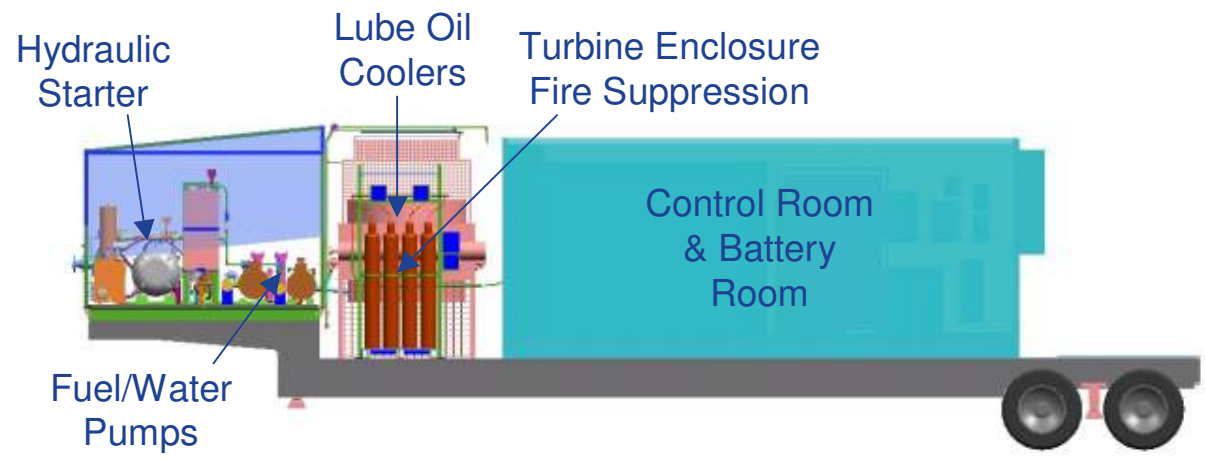
New Two-Trailer Design



TM2500+ General Arrangement



Auxiliary Trailer



What's New?

- LM2500 PLUS gas turbine
 - Up to 31% more power!
- Two-trailer design
 - Smaller footprint
- **Improved interconnection design**
 - **Faster installation and set-up**

Interconnection Improvements for Faster Set-up

- Improved inlet & exhaust connections for quicker installation & set-up
- Can be set up quickly

