



High speed Cutter
Year Built 1991
Year Refit/Refurbished
2012/2013/2014
Maintenance and
upkeep is ongoing.

Vosper Thornycroft Stabilizers.

This prior USCGC. Is an “Island Class C” patrol boat that was commissioned by the US Coast Guard in September of 1991, and was built by Bollinger Machine Shop and Shipyard in Lockport, Louisiana.

- ✚ Dimensions:
- ✚ Length: 33.5m / 110ft and a
- ✚ Beam: 06.04m / 21ft
- ✚ Draft: 02.02m / 6.38ft.
- ✚ Displacement of: 165 tons

The cutter is powered by low hour NEW yr. 2012 installed twin caterpillar diesel engines affording a maximum speed of 29.5 to 33 knots and a range of 3,300 nautical miles @ 12 knots. Vessel will operate @ 12 knots on one engine this practice is common.

- ✚ Vessel can operate QUITE SHIP due to Exhaust mods.

Works Completed in 2012 @ a cost of: \$2,700,000.00:

- ✚ New Engines: Caterpillar 3516 V-16 Twin turbo (3,530 hours of use since rectification of Caterpillar)
- ✚ New Propeller Shafts
- ✚ Strut bearings and shaft bearings as needed
- ✚ New Water Tanks
- ✚ Vessel completely Rewired
- ✚ Bigger water pumps for the main engines
- ✚ Haul out and bottom treated 9 year remaining CARPAC CATODIC SYSTEM
- ✚ Propellers Re-pitched and conditioned
- ✚ Hull plates Auto-gaged found in very good condition
- ✚ New 20 mm Canon mounting brackets
- ✚ Commercial Fishing licensing permits issued for Tuna, Sword, etc. (don't ask, it has not been fished)
- ✚ Full exterior painting and boot stripe was done in: latter part of 2014
- ✚ New mooring lines and fenders
- ✚ Hydrodynamic Efficiency Improvements completed to this vessel. / (File available)

Hull and Main Superstructure Weather deck:

BS-4360 GR 43A Steel.

CARPAC CATODIC SYSTEM: Hull protection 9 years left of free maintenance
7 Compartments watertight with bilge pumps for transfer

Superstructure: 5086 Aluminum Alloy

Autonomy:

- ✚ 5 to 6 Days on constant patrol
- ✚ 10 knots 4,400 NM
- ✚ 12 knots 3,300 NM
- ✚ Cruise Speed: 22 knots

Designated as a fast patrol boat and a high-speed heavy weather craft, the USCGC also employs active-fin roll stabilizers to minimize ship motion and reduce crew fatigue.

This vessel has a 7-compartment subdivision, with adequate intact stability for 70kt beam winds.





Below the Main Deck, the vessel divided into 8 watertight compartments designed to prevent progressive flooding in the event of collision or grounding. There are watertight doors and hatches fitted to give access to or through these boundaries. The main structure of the hull up to the Weather Deck fabricated of welded mild steel (BS 4360). The Superstructure and Weather Deck constructed of welded aluminum alloy plate.

This truly multi-dimensional craft is capable of operating in various capacities such as:

- National defense
- Environmental protection
- Search and rescue
- Interception
- Firefighting
- Oil field security
- Towing.
- Fisheries Patrol

This cutter is ready and able to respond to any call.

Prior operational missions: (To name a few)

-  Law enforcement patrols
-  Surveillance of offshore shipping
-  Boarding operations
-  Search and Rescue operations

While built primarily for law enforcement purposes, she has completed many multi-purpose missions. She normally engaged in Search & Rescue as well as Enforcement of Commercial Fisheries Laws & Regulations. The USCGC also conducted counter-drug patrols, and completed an extended deployment to the Mediterranean Sea in support of Operation Enduring Freedom. She earned a prominent place in history by serving in the search for John F. Kennedy Jr.'s plane in 1999, supporting Operation Iraqi Freedom in 2003 during a six-month deployment, helping in the search for Egypt Air 900, and assisting in the rescue of Hurricane Sandy in 2012.



While in service in light Ice conditions

NOTE:

This is common with U.S. Military vessels do not have certification certificates in order to keep down the cost of the ship.

- ❖ Vessel strengthened for light Ice but does not hold certification certificate.
- ❖ Vessel built to ABS specifications, but is not holding certification certificate.

Owner is trying to acquire build sheet from build yard, but the owner has been advised the data is classified...

Photo Information:

Most all photos in this file are taken April 2nd 2015 the photos taken in DROPBOX LINK are all taken April 2nd, 2015 by SWB personally, Mathew Moen/Owner Manager.



Particulars:

Electronics:

- + Garmin 8215 Chart-plotter
- + Garmin Radar
- + Furuno Depth sounder
- + Furuno Radar
- + VHF- 3 total
- + Furuno Weather Fax
- + Security Cameras
- + Kenwood TS-850 SSB/USB/CWFM/AM HF Transceiver
- + KVH M15
- + 3 LED TV
- + Apple Computer
- + Emergency Power off lights in all rooms and compartments
- + Loudspeaker in every room and on deck
- + Alarms For: Collision/Fog/Chemical Attack/Fire : IN ALL SPACES AND OPEN BRIDGE
- + 2-406 EPIRBs
- + Auto-Pilot
- + Gyrocompass New 2012

- ✚ Azimut on deck
- ✚ 2 compasses
- ✚ AIS
- ✚ VHF/UHF Signal finder
- ✚ Wind speed and Direction
- ✚ Weather Ant.

AMMUNITIONS ROOM:

YES

- ✚ Ammunition and Explosive security anti explosion room
- ✚ Ammo and guns security lockers for 2 M2 50CAL, 4 M4 8 Sig Sauer 40 3 M870 Shotguns.
- ✚ Outside base mount for the 25MM M249 Bushmaster Electric Chain Cannon
- ✚ 2 Stands for the M2HB 50
- ✚ 2 Stands for M240

Lifesaving equipment:

- ✚ 2 Zodiac SOLAS 8 persons each liferaft on deck
- ✚ 50 Life-vests
- ✚ 1 Master Medical kit for 50 PAX
- ✚ 3 Medical kits other
- ✚ Drug Test Equipment
- ✚ Defibulator
- ✚ Forensic kit
- ✚ Search and Rescue Equipment

Alarms:

- ✚ Collision
- ✚ Chemical Attack
- ✚ Fire

Lights & Sirens:

- ✚ External and internal lights for normal operations and night tactics in place.
- ✚ (Including silent running exhaust system.)
- ✚ Internal communications & sirens in place.
- ✚ External blue lighting and sirens in place.

Complete Firefighting System:

2 Systems: (1) one in engine room / (1) one in battery room approved by inspection until: September 2015

- ✚ Internal & External
- ✚ Next Inspection W/ Halon and 18 Extinguishers due Sept. 2015
- ✚ Oil-Water Separator: SAREX

External Crane:

- ✚ 1,750 pounds capacity
- ✚ To be used primarily for a dingy, approaches, and reconnaissance.
The original boat is an 18ft. Zodiac with a Yamaha 90Hp - which is not included in the sale.

Water Capacity:

- ✚ 2,500 - gallons

Watermaker Capacity:

- ✚ Village Marine PW1200 NEW 500 gal/day

Other tankage quantities:

- ✚ Fuel: 10,000 Gals
- ✚ Grey water tanks: 2 Tanks
- ✚ Sewage tank: 544 gallons

NOTE: Sewage and Grey water tanks have been cleaned during refit.

Galley & Dining:

- ✚ Industrial kitchen, dishwasher, microwave, freezer and refrigerator.
- ✚ All Ranch cooking Equipment
- ✚ Big Refrigeration and Freezer
- ✚ Dining room has 3 tables and accommodates 12 persons.

Scuba tanks used as air canisters for smoke inhalation prevention Equipment:

- ✚ Tanks: 18 MSA with masks and pressure valves etc.

Miscellaneous:

- ✚ Dock lines, Fenders, and anchor
- ✚ 2 water pumps for the air compressor unit
- ✚ 2 water pumps for the fresh water
- ✚ 2 water heaters: AKUTEMP TELTECH INC.
- ✚ 2 fire pumps in engine room: RELIANCE 30HP EACH 5350 RPM / 460V
- ✚ 1 diesel water pump or transfer fuel to other vessel is on deck
- ✚ 2 barrels with 2 new water pumps gasoline to rescue sinking boats
- ✚ 5 fire station on deck with high pressure hoses pumping (200 yards of salt water to fight fire on other boats)
- ✚ Search lights
- ✚ CONDITION XRAY/YOKE/ZEBRA – READY
- ✚ RED LIGHTS ON DECK AND IN EVERY ROOM
- ✚ WIRE COMMUNICATIONS IN EVERY PLACE INCLUDING OUTSIDE
- ✚ FIBER OPTIC FOR COMM AND INTERNET IN EVERY ROOM

Fire Alarm System:

- ✚ Pyotronics Alarm System: 3 systems, monitors every room panels on mess and bridge.

Comfort of all Cabin and public areas:

- ✚ All under Air Conditioning or Heating as required

Complement:



- ✚ 18 New Camas / Sheets and covers for all.
- ✚ 36 New Towel sets.

1 Stateroom for one birth one head for Commanding officer W/ strong box, head W/shower

1 Stateroom for one birth one head for Executive/ first officer W/ strong box, head W/ shower.

- ✚ 1 Stateroom 2 officers W/ strong boxes and head and show
- ✚ 1 Stateroom 6 crew W/ 1 head W/ toilets and showers.
- ✚ 1 stateroom 8 crew W/ 1 head W/ toilets and showers.

Galley area:

All ships manuals specifications etc. in galley as shown below photo.





Fully equipped with all pots, pans, plates, flatwear etc.

Machinery spaces; Propulsion & Power Generators

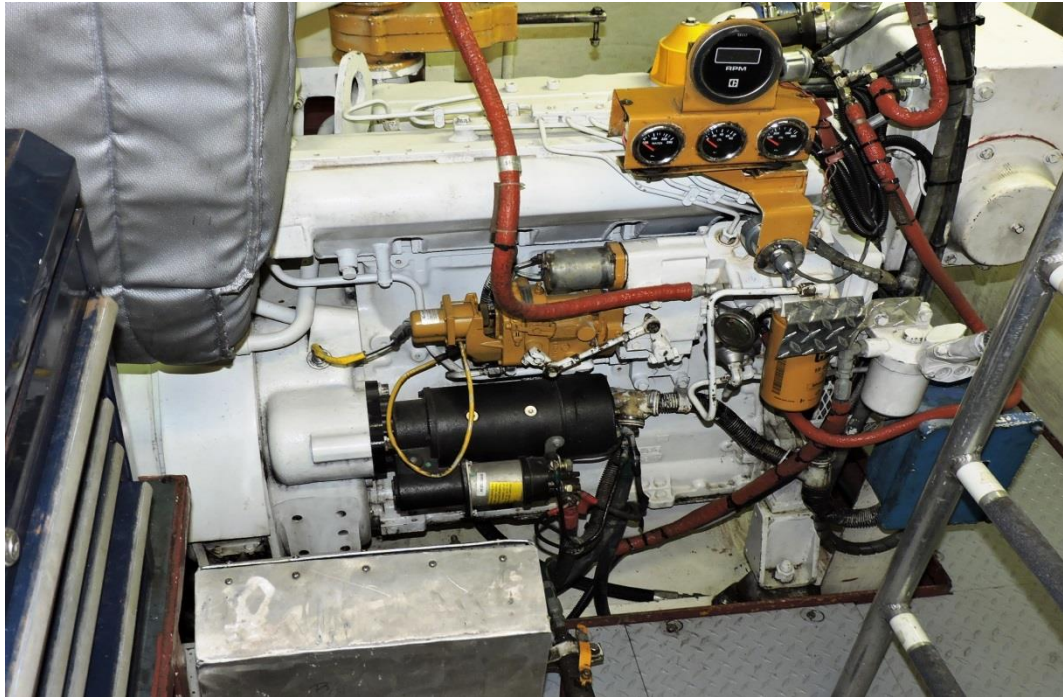
✚ Main Engines: (2)



- ✚ Year: 2012
- ✚ Caterpillar 3516 V-16 Twin turbo (3,530 hours of use since rectification of Caterpillar)
- ✚ Rated at 2,700 HP Each / Total: 5,400 both engines
- ✚ 3,530 Hrs. since installed 2012 as NEW
- ✚ **\$150,000USD in spare parts available with purchase only.**
- ✚ All engines and generators have all new gages and sensors.
- ✚ All tools for the vessel maintenance with sale of vessel only.

Generators Electrical:

- ✚ Generator/s (2) Caterpillar 3304T, 100-KW each on W/7,000 hours since rectification of Caterpillar/s @ 3.5 gallons per hour for one generator, that can supply all ships services.
- ✚ 480V/110V/24V/12V High voltage system 460v AC 60Hz, 3 phase Medium voltage system 24V DC battery and transformer.
- ✚ Batteries due in 3 years



Exhaust:

For the engines on normal operations side dump.
FOR SILENT operations with underwater split.

Shafts:

- ✚ New in 2012 Two (2) shafts Inline

Shaft Horsepower:

- ✚ 2,7000 per shaft

Active-fin roll stabilizers:

- ✚ Minimize ship motion and reduce crew fatigue purpose set.
- ✚ Vosper Thornycroft

Fuel Capacity @ 95%

- ✚ 9,306 U.S. Gallons @ 95%



Endurance:

- ✚ 5/6 days

Other data information available to buyer:

- ✚ 110 MEP GFE Inventory Sheet
- ✚ Caterpillar Tool list for engines
- ✚ Caterpillar Spare Parts list





Stern appendage gives the ship a flatter ride and a 30% fuel savings. Additional cost .5 Million



Reference: SWBFastCutter

Disclaimer

Specifications provided for general information only. We cannot guarantee the correctness of given information or be liable for any inaccuracy or warrant the condition of vessels. All dimensions, capacities, speeds etc. are approximate. All information given is subject to fair, wear and tear. We therefore recommend clients to have vessels, specifications and information thoroughly checked and surveyed for accuracy by an independent qualified marine surveyor and purchase only subject to satisfied survey and sea trial. Vessels are offered subject to still being for sale. Unless seller and purchaser have agreed this specification and information in signing in contract, we reserve the right to change specification, price etc. without prior notice. We are not responsible for the outcome of our publications and activities as result thereof.