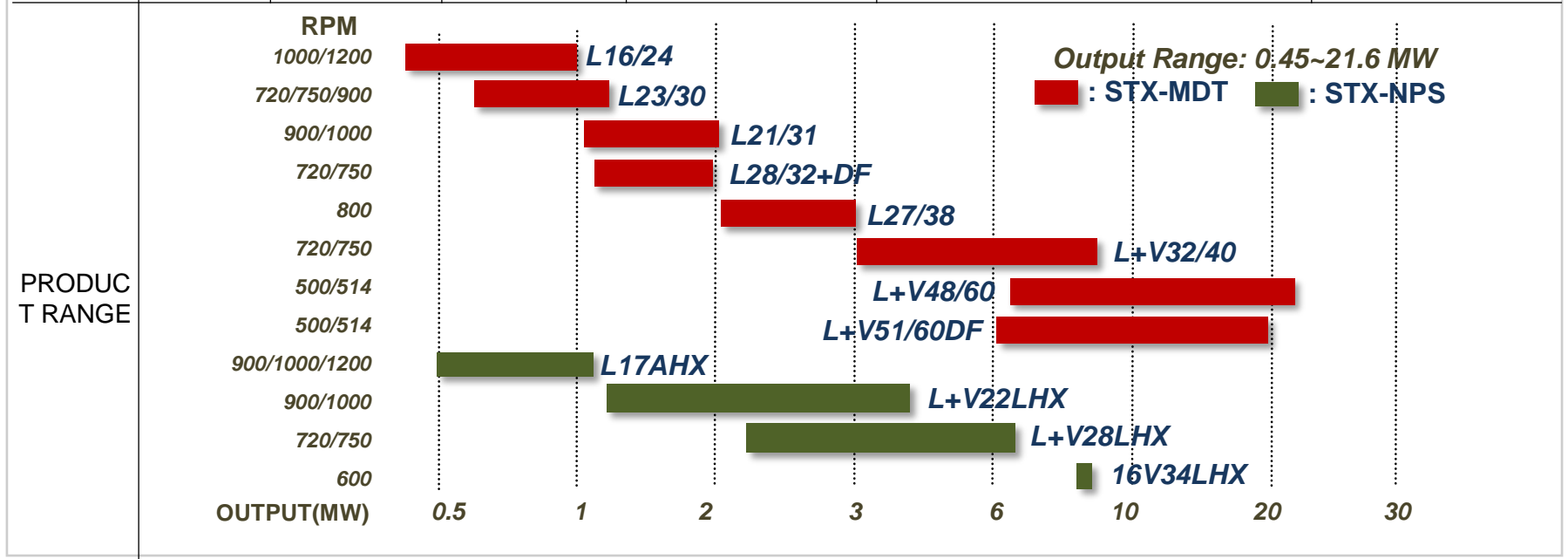
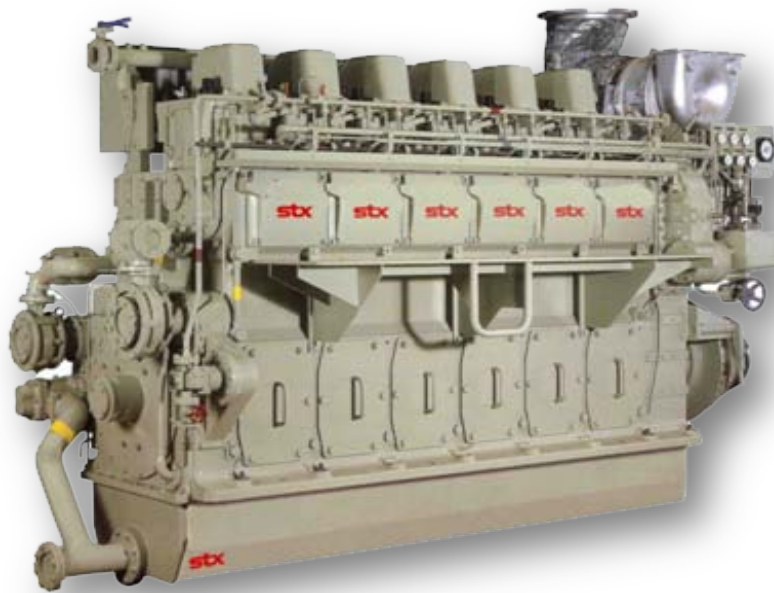


# MEDIUM SPEED DIESEL GEN-SET STOCK LIST

	MODEL	OUTPUT (KWm)	(HZ) (RPM)	FUEL CONSUMPTION [g/kWm-hr]	QUANTITY
GENSET	18V32/40	9,080	60HZ (720)	183 (+3% tol)	16
	16V34HLX	8,030	50HZ (600)	186.7 (+5% tol)	7
	8L22HLX	1,660	50HZ (1,000)	208	3



# ENGINE SPECIFICATION



## 8L22HLX Oil Consumption (100% Load)

RPM [rpm]	Engine Output [kWm]	FOC [g/kWe-hr]
900 ~ 1000	1480 ~ 1660	198~210

## 8L22HLX Main Data

Cylinder No.	8	
Bore/Stroke	220/300mm	
Frequency	60Hz	50Hz
Power per Cylinder	185kWm	207.5kWm
Power range (Under ISO-3046)	1406kWe	1577kWe
Speed	900rpm	1000rpm
Mean piston speed	9.0m/s	10.0m/s
Fuel acceptance	HFO (700cSt/50°C)	

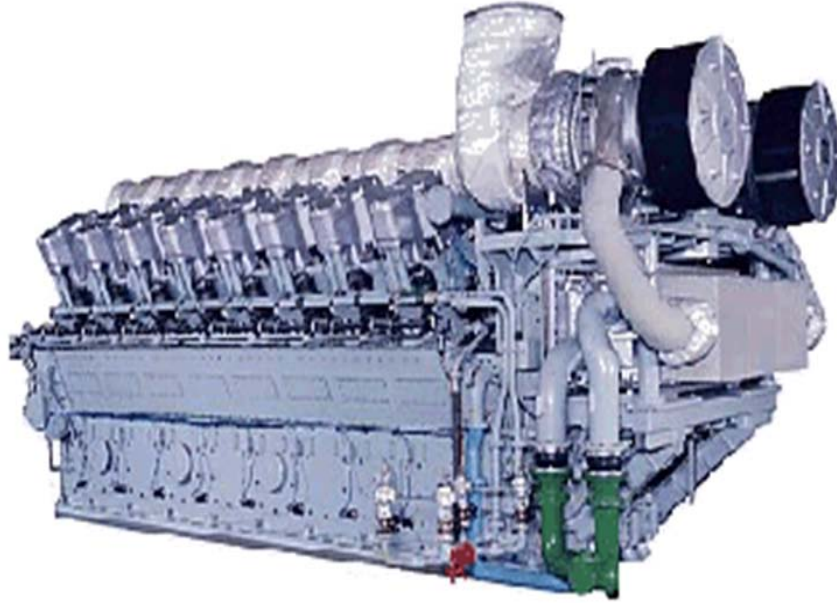
The fuel consumption is corresponding to ISO 3046/I-1995(E) standard reference conditions with tolerance of +5%, without engine driven pumps and with a fuel lower calorific value of 42,700 kJ/kg excluding leakage and/or treatment losses in the process.

# ENGINE PHOTOS – 8L22HLX X 3 SETS

---



# ENGINE SPECIFICATION



## 16V34HLX Main Data

Cylinder No.	16	
Bore/Stroke	340/500mm	
Frequency	60Hz	50Hz
Power per Cylinder	555kWm	
Power range (Under ISO-3046)	7,789kWe	
Speed	600 rpm	
Mean piston speed	10.0m/s	
Fuel acceptance	HFO (700cSt/50°C)	

### • 16V34HLX Oil Consumption (100% Load)

RPM	Engine Output [kWm]	FOC [g/kWe·hr]
600	8,030	188

The fuel consumption is corresponding to ISO 3046/I-1995(E) standard reference conditions with tolerance of +5%, without engine driven pumps and with a fuel lower calorific value of 42,700 kJ/kg excluding leakage and/or treatment losses in the process.

# ENGINE PHOTOS – 16V34HLX X 7 SETS

---



# ENGINE SPECIFICATION



## 18V32/40 Main Data

Cylinder No.	18	
Bore/Stroke	320/400mm	
Frequency	60Hz	50Hz
Power per Cylinder	500kWm	
Power range (Under ISO-3046)	8,730kWe	
Speed	720rpm	750rpm
Mean piston speed	9.6m/s	10.0m/s
Fuel acceptance	HFO (700cSt/50°C)	

### ● 18V32/40 Oil Consumption (100% Load)

RPM	Engine Output [kWm]	FOC [g/kWe·hr]
720~750	9,000	186.6

The fuel consumption is corresponding to ISO 3046/I-1995(E) standard reference conditions with tolerance of +5%, without engine driven pumps and with a fuel lower calorific value of 42,700 kJ/kg excluding leakage and/or treatment losses in the process.

# ENGINE PHOTOS – 18V32/40 X 16 SETS

