

True Blue



FOD

Equipment



BOMB DISPOSAL SUIT

Component	V-50 Rating (m/s)
Suit	600 m/s
Helmet	600 m/s
Helmet Visor	800m/s
Blast Plates (groin, chest, and neck)	1600m/s
Thigh Front	650m/s
Shin Front	600m/s
Foot Cover	450m/s
Feature	<ol style="list-style-type: none">1.Helmet Remote Control Module2.Intelligent hand controller design3.Two highlight LED headlamp4.Optional body Cooling System provides personal cooling5.Groin plate retracts



BD3000

BOMB DISPOSAL SUIT

Bulletproof Mask	Thickness	22.4mm
	Weight	1032g
	Material	Organic transparent composite
Bulletproof Helmet	Size	361×273×262mm
	Protective Area	0.25m ²
	Weight	4104g
	Material	Kevlar composites laminated
The front of smock (Main body of smock)	Size	580×520mm
	Weight	1486g
	Material	34-layer woven fabric (Aramid fiber)
Blast plate +The front of smock	Throat Plate Dimension	270×160×19.7mm
	Throat Plate Weight	1313g
	Dimension	330×260×19.4mm
	Abdominal Plate Weight	2058g
Arm (Right Arm,Left Arm)	Size	500×520mm
	Weight	1486g
	Material	25-layer woven fabric (Aramid fiber)



AR-II

The back of thigh and calf (Left and Right Thigh, Left and Right Shin)	Size	530×270mm	
	Weight	529g	
	Material	21-layer woven fabric (Aramid fiber)	
The front of shin (Left and Right Outer)	Size	460×270mm	
	Weight	632g	
	Material	30-layer woven fabric (Aramid fiber)	
Bomb Suit Total Weight	32.7kg (without helmet+mask+cooling suit)		
Power supply	12V battery		
Communication system	wired communication system, compatible with most communication systems		
Cooling fan	200 liters/min, adjustable speed		
Cooling suit	Clothes weight	1.12 kg	
	Water cooled package device	2.0 kg	
V50 Rating	Bulletproof Mask	744m/s	
	Bulletproof Helmet	780m/s	
	The front of smock(Main body of smock)	654m/s	
	Blast plate +The front of smock	>2022m/s	
	Arm(Right Arm,Left Arm)	531m/s	
	The back of thigh and calf	492m/s	
	The front of shin(Left and Right Outer)	593m/s	



EXPLOSIVE DISPOSAL ROBOT

EXPL0SIVE DISPOSAL ROBOT



GAJQRPB-HJ72



A-TAC EOD Robot



HJ-R30-Throw Surveillance robot



GAJQRPB-HJH1 robot



HJ-RM14-Throw Surveillance robot



HJ-RBOT710 v2.0 EOD Robot

DETECTION ROBOT

DETECTION ROBOT

weight	3.5kg (including battery)
Dimensions	<30×25×15cm (L×W×D)
Maximum driving	speed≥5km/h
vertical drop height	≥5m
Obstacle Crossing height	>5cm
Control distance	(open areas in the wild with high visibility) ≥100m
working time	more than 2h
Rugged:	IP67



This device can penetrate the wooden walls, retaining walls, brick walls and reinforced concrete and other general building wall materials, and can detect the presence of personnel, personnel movement and distance, etc. behind the wall.

DETECTION ROBOT

DETECTION ROBOT

weight	≤900g (battery included)
Dimensions	≤250×100×100mm
Maximum driving	≥0.65m/s
Maximum climbing angle	≥35°
Maximum unbreakable distance	Vertical: ≥9m Horizontal: ≥20m
Remote control distance	Indoor: ≥30m(Ground) Outdoor: ≥80m(Ground)
working time	more than 2h
Protecting Rate	IP67
Feature	small, light weight, low walking noise



cast in the building or small space for reconnaissance operations, transmit the observation of video and audio data to the control terminal; equipped with infrared light module, can realize day and night reconnaissance;

SMALL ROBOT



GAJQRPB-HJH1 with 6-degree-of-freedom robotic arm can **grab 10kg objects**; the 2-DOF pan-tilt and vehicle body camera, can complete the monitoring of the surrounding environment;

weight	≤60kg
Dimensions	680×500×680mm
Loading capacity	≥70kg, speed≥0.4m/s
Max speed	0-3m/s
Working time	No less than 3 hours
Rugged:	IP65



The A-TAC ROV is small, **lightweight**, Its modular construction and advanced electronic design make maintenance and support in the field simple and inexpensive, improving the life cycle of the machine.

weight	20kg
Dimensions	49*44*38cm
Full extend/Close Lifting	5kg/7kg
speed	8km/h
Vertical/Horizontal reach:	1150mm/750mm
Rugged:	IP65

SMALL ROBOT



Robot size	≤ 830mm×600mm×460mm (Fully retracted)
Controller size	≤360mm×210mm×70mm
Robotic arm length	≥ 2400mm (With extension joints, fully extended) ≥1700mm (Without extension joints, fully extended)
Robot weight	≤37kg (Including two batteries)
Controller weight	≤ 2kg (Excluding backpack)
Maximum speed	≥1.8m/s, (5 gear shifting, continuously variable speed)
Vertical and width leaping over height	400mm
Gradeability and Climbing stairs	50°
Robotic arm flat stretch Grabbing	≥6kg
Robotic armretracted Grabbing	≥16kg
Maximum clamping force Grabbing	≥300N
Maximum clamping width Grabbing	≥160mm

HJ-RBOT710 EOD Robot is the only small and medium size EOD robot that has **double gripper** design, super multi-perspective function, and with integration of reconnaissance, transfer and disposal.

Feature:dust prevention, waterproofing and corrosion protection

SMALL ROBOT

SWIFT ROBOT

Six degrees of freedom robotic arm
Maximum grab height/distance: 1500mm/1200mm

Maximum grab weight/width: 30KG/ 160mm

Pattern adaptive image system

Intelligent preset bit control design

XYZ operation design based on automatic solution

Remote 3D real-time display

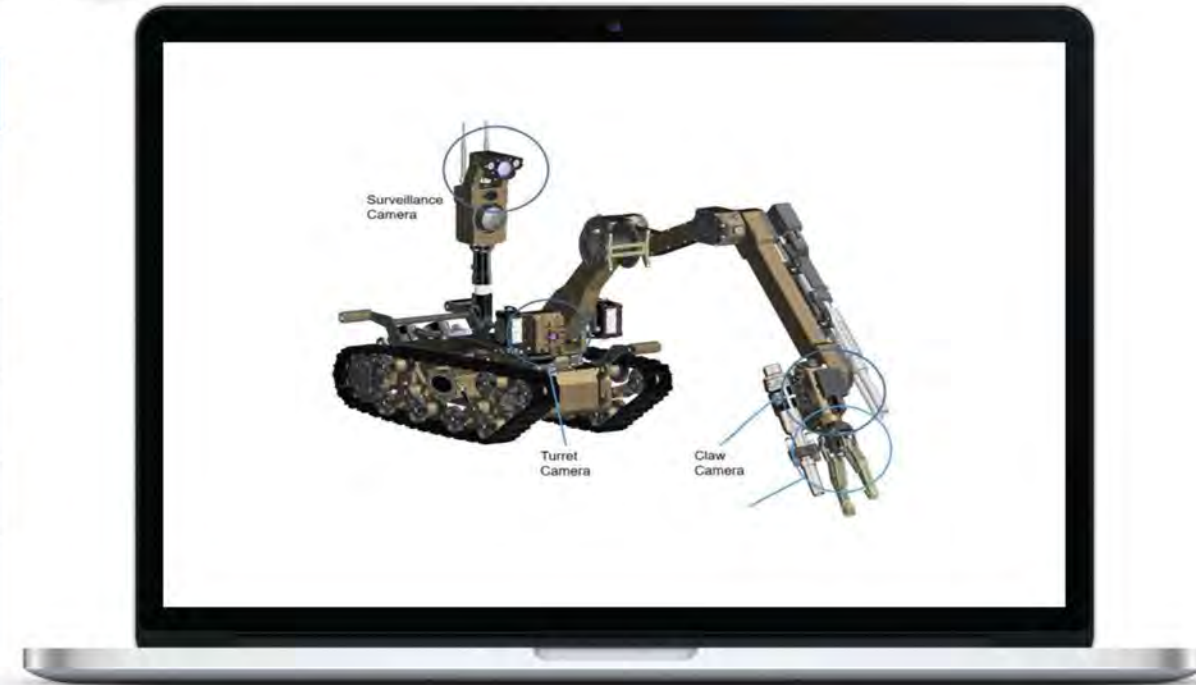


GAJQRPB-HJ72



TRAILBLAZER ROBOT

Size	100*45*55cm
Weight	112kg
Ingress Protection	IP66
Lifting capacity	no more than 50kg
Line of Sight	Up to 1000m
Non-line of Sight	Up to 300m
off-road and climbing ability	stairs, gravel,sand, grassland and other terrain



Trailblazer robot equipped with auxiliary arm, **7 degrees of freedom** mechanical arm and adjustable auxiliary support wheel. Explosive disposal tasks, tactical tasks, nuclear and biochemical radioactive explosive cleaning tasks or other dangerous operation tasks.

The trail blazer is able to grab 0-60kg objects in different position.

UNICORN LARGE EOD ROBOT

UNICORN LARGE EOD ROBOT

Speed	0-6 km/h infinitely variable
Max gradient	Vertically 40, Diagonally 20, with appropriate traction
Manipulator Assembly	Lifting capacity: Manipulator retracted: 75 kg Manipulator extended: 30 kg Claw capacity: 300 mm Degrees of freedom: 6 +3
Wireless System	Frequency band: 2.4G Range: Line of Sight in excess of 1 km (in ideal circumstances)
Physical Properties	<ul style="list-style-type: none">• Power output: 4 ports, can be connected with 4 accessories like Disruptors, shotgun• Weight: 275 kg (baseline weight before accessories)• Size: chassis: 0.76m Width x 1.57 m Length, Height: 1.15 m (without antenna) 1.45m (with detachable PTZ camera) manipulator in the folded



- Multiple sensors can be used simultaneously, at least 7 ports can be extended
- **6 wheels is suitable for outdoor and forest environment.**
- **Large robot is able to grab 0-75kg objects**

RECOILLESS DISRUPTOR

БЕКОИГГЕ?? ДИЗКОНЬЛОК

Barrel	stainless steel
Material	Steel & Aluminum
Length of barrel	about 42cm
Igniting Voltage	24V, 1Ah
Power of initiator	9V battery
Hard Projectile	Stainless Steel/Nylon, have 4 style
Weight of Disruptor	About 12kg



The Recoilless Disruptor RD 3000 disrupt many types of Improvised Explosive Devices (IED) with high probability of avoiding detonation or explosion of the suspect device. It can be use together with Unicorn.

MULTI SENSORS DETECTOR



Detection performance index:

1)For mines (anti-infantry mine)

Detection distance:> 15 cm

2)For unexploded bombs

Detection distance: > 50 cm (for 60mm metal cylinder)

> 80cm (for 155mm metal cylinder)

General performance indicators:

1)Operation weight: <4.2kg;

2)Continuous working time:> 6h;

3)Alarm mode: vibration, image, sound, binary;

4)Soil adaptability: clay (neutral), sandy soil, magnetic soil, laterite;

5)environmental suitability

a)Operating temperature: -20°C ~ + 50°C;

b)Environmental Adaption: IP55.

INVESTIGATION ENDOSCOPE

BD-J6015KJ is mainly used to assist tactical investigation, EOD, security inspection, anti-smuggling, search and rescue and other related testing work. It has the characteristics of light overall weight, high strength, single-person operation, easy to carry, simple operation, sturdy and durable, and strong concealment.





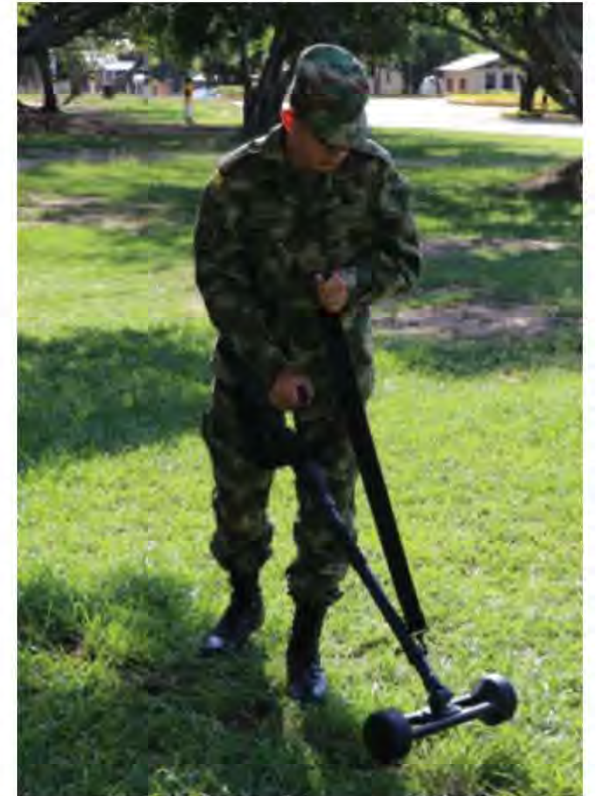
Size	350*155*59mm
Display	5 inch industrial grade screen
Output port	TF card, HDMI port, Micro USB
Memory card	Standard 32G TF card, Support up to 128G
Power	Dedicated rechargeable lithium battery pack, which can be recharged online and has a long battery life ≥ 4 hours
IP grade	IP54
Working temperature	-10°C ~ 50°C
Storage temperature	-20°C ~ 60°C
Relative humidity	Max 90%, no condensation
Weight	≤ 0.8 kg(Weight with battery)
Operation method	Button navigation, dual camera and video buttons
Support function	With freeze, zoom, photo, flip, video playback, analog ruler functions
File format	Image JPEG (JPG) format, Video AVI format
Language	English

LFP-DX338 CABLE DETECTOR

The Cable Detector is the only commercially available detector specially designed to detect surface laid and buried command wires used to initiate Command Wire Improvised Explosive Devices (CWIED).

The detector has been designed for use by suitably trained and equipped teams in Counter Improvised Explosive Device (CIED) and Counter Terrorist Search (CTS) operations.

It is suitable for use in all weathers, the search head is waterproof and can be immersed in water, especially useful when searching water obstacles. The ergonomic design allows the operator to operate the unit for long periods, essential when conducting route searches.



Detection depth	Min 50 metres cable down to 20cm in most soil conditions
Alarm	Audible
Power	3 pcs D Cell Alkaline Batteries
Working hours	About 4hs
Sensitivity	3 levels
Operating weight	≤4kg
Working temperature	-20° C to + 55° C
Equipment Contents:	D Cell Alkaline Battery*6, Shoulder Harness, Holding Handle, Control Unit, Heavy Duty, Transit Case, Field Backpack, Test Piece, Clamshell Earpiece, Detector Head
LED light illumination system for night use	Handle is ergonomic design, not easy to get fatigue for long time operation.



NON-LINEAR DETECTOR

NON-LINEAR DETECTOR



Radio Station



Radio station with a transistor switch



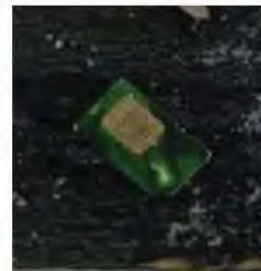
Mobile Phone with a transistor switch



Electronic watch with transistor switch



Transistor switch, LED



SIM card



BD RC10 Long Distance Non-Linear Junction Detector is designed to locate and detect wire and wireless electronic devices that contains semiconductor components, such as detonating devices and bugs etc. The device is compact, lightweight, easy to carry. It can be deployed in outside field, meeting room, station and etc.



Components

Detection range:	not less than 50cm (Target imitator)
Emission frequency	850MHz
Power supply	6V rechargeable battery
Output power	30W-200W
Sensitivity of receiver	130 dB/W
Attenuation	10; 20; 30 dB
Continuous operation time	not less than 4 h
Operational temperature	-25°C~55°C
Weight (complete set in standard packing)	≤13kg



MINE DETECTOR

WINE DEFECIOK

The BD MD8+ is a hand held metal detector can be used for

- Mine Detection/Clearance
- Explosive Ordnance Clearance
- Post Blast Scene Search
- Area Search

Specifications:

Batteries: Quantity 3 Alkaline D size cells for at least 12 hours.

Detection Performance: Type 72 APM 100mm, 9mm bullet case 250mm

Maximum Usable Detection: 0.05g Stainless steel at 75mm

Temperature: -25°C to 60°C (operation and storage)

Transit Weight: 5kg

Operating Weight: 2.3kg



NON-MAGNETIC TOOL KIT

The 85pcs Non-magnetic Tool kit is a comprehensive tool kit for EOD operations.

contains the following items:

Tweezers, Neat Tips, 200mm length Probe, straight and right angle, 187mm length Knife, 145mm blade, 250mm length Scissors, 225mm length Hacksaw, blade length 300mm Blade, 300mm to fit hacksaw Scraper, 30mm blade width, flat, 345mm length Wire brush, 290mm length Screwdriver, flat, 3mm blade width, 150mm length Screwdriver, flat, 4mm blade width, 182mm length Screwdriver, flat, 6mm blade width, 237mm length



HOOK & LINE KIT MK4

HOOK & LINE KIT MK4



TELESCOPIC MANIPULATOR

Weight (excluding the tripod)	6kg
Total length	> 4m
Max. gripping weight	10kg
Continuous working time	3 hours (with full payload)
Grip rotating angle	0-360 degree
Grip connection angle	90°/135°/180°
Grip open range	0-220mm
Counterweight	Battery



Features:

The rotating capability of the grip make the manipulator can grip the suspect object from different angle.

It can **lift an object up to 10kg weight**.The grip is easy to be mounted and disassembled

PORTABLE X-RAY SCANNING SYSTEM

Description:

This device is a light weight ,portable,battery powered x-ray scanning system designed in co-operation with the first responder and EOD teams to meet the need of the field operative. It is light weight and comes with user friendly software that helps operators in understanding the functions and operations in a less time.



Detector Type	Amorphous Silicon with TFT
Detector Area	433mmx 354mm (Standard)
Detector Thickness	15mm
Pixel pitch	154 μ m
Pixel array	2816X2304pixels
Pixel Depth	16 bits
Image Acquisition Time	4-5s
Weight	6.4kg with battery
Power supply	220V AC/50Hz
Communication	Wired: 50 meters fiber on a roller, TCP/IP Ethernet
	Wireless: 5G Wi-Fi , no less than 70m
Operating Temperature	-10°C+55°C
Technical Specification-x-ray Generator	
Working hours	More than 5 hours
Voltage	150kV
Penetration	50mm Aluminium Plate
Weight	5Kgwith battery
Technical Specification – Imaging Station (PC)	
Type	Laptop computer
Processor	Intel Core i5 processor
Display	13 or 14" Full High Definition LED Display
Memory	8GB
Hard Drive	No less than 500GB
Operating system	English MS Windows 10
Software	Automatic Optimization, Invert, Revert, Pseudocolor image,Rotate, Flip Horizontal,Flip Vertical,Zoom, Deep Focus, PolygonOn screen measurement, Merge, Save, 3D image



BOMB CONTAINER TRAILER



- (1)Anti-explosion capacity: high level
 - (2)Mouth diameter of the bomb container: $810\text{mm} \pm 10\text{mm}$
 - (3)Maximum opening size of cover: $560\text{mm} \pm 10\text{mm}$
 - (4)Trailer width: $1795\text{mm} \pm 10\text{mm}$
 - (5)Minimum ground clearance of trailer $\geq 280\text{mm}$
 - (6)Maximum ground speed: 60km/h
 - (7)Cover opening direction : Bomb container cover opens rearwards;
- Wired control distance: 100m ;
Wireless control distance: 120m ;
- Suitable for 5kg TNT**

Function

The sealed bomb container design retains all fragmentation (Up to 5Kg TNT), effectively reducing the safety risk during transit.



The bomb container can shield electromagnetic signals and effectively prevent remote detonation.



Mouth compartment opening for ease of loading and unloading UXO. Featuring remote opening and closing of the cover to ensure the safety of personnel.

Equipped with anti-shock suspension system with damping and with run-flat tires



Incorporating service brake, parking brake and emergency brake functions

Trailer Lighting: Equipped with a brake warning light and signal turning lights when connected to the military off-road vehicle



Monitoring system: equipped with pan tilt camera which provides clear observation during loading and unloading of UXO and to assist with remote closing of bomb container cover

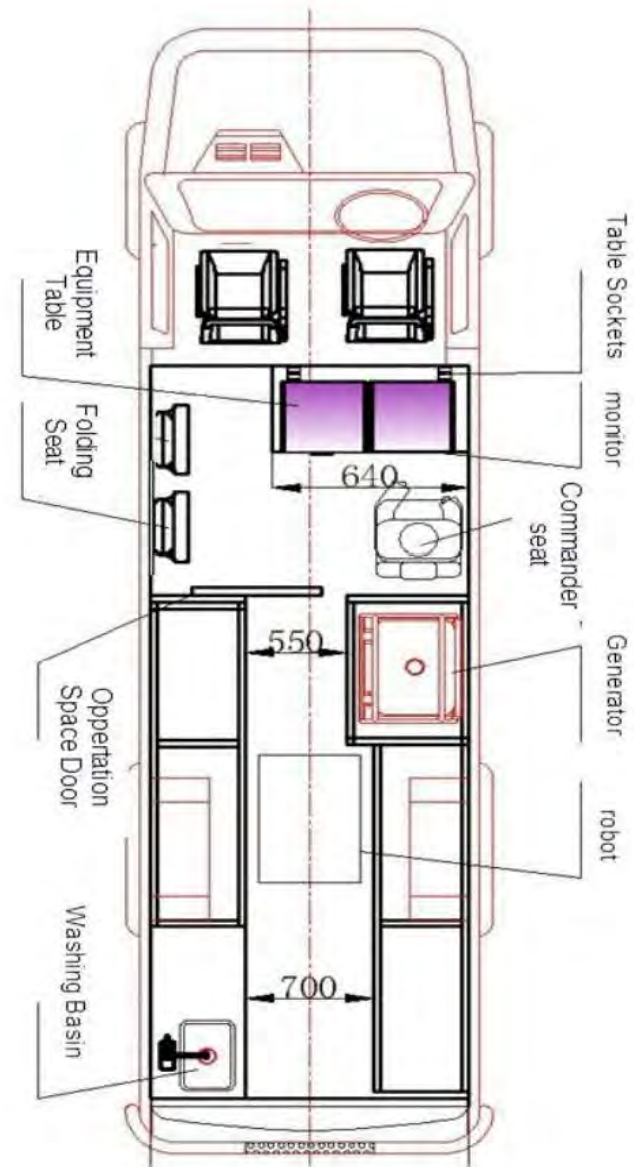
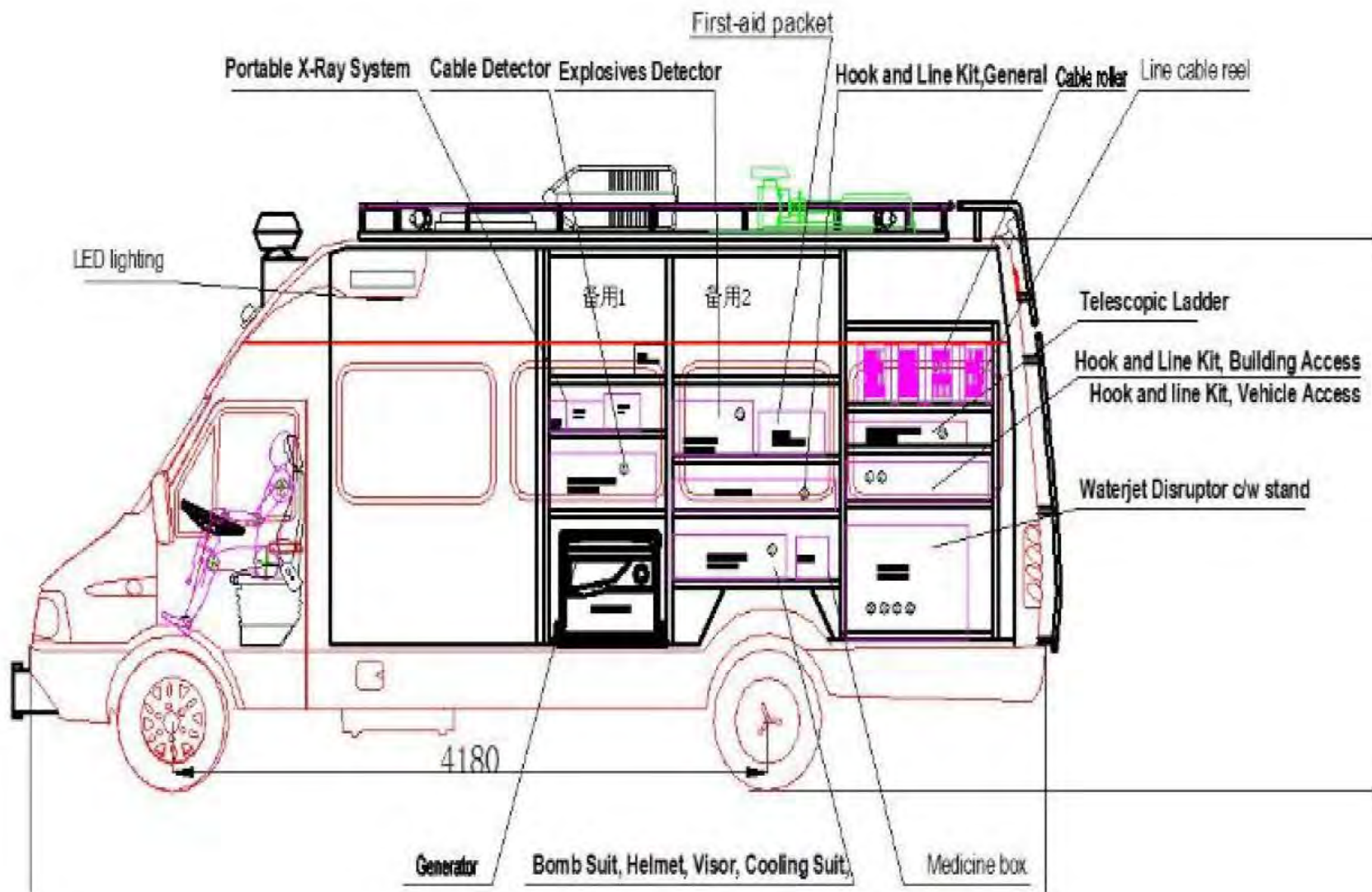
EOD RESPONSE VEHICLE

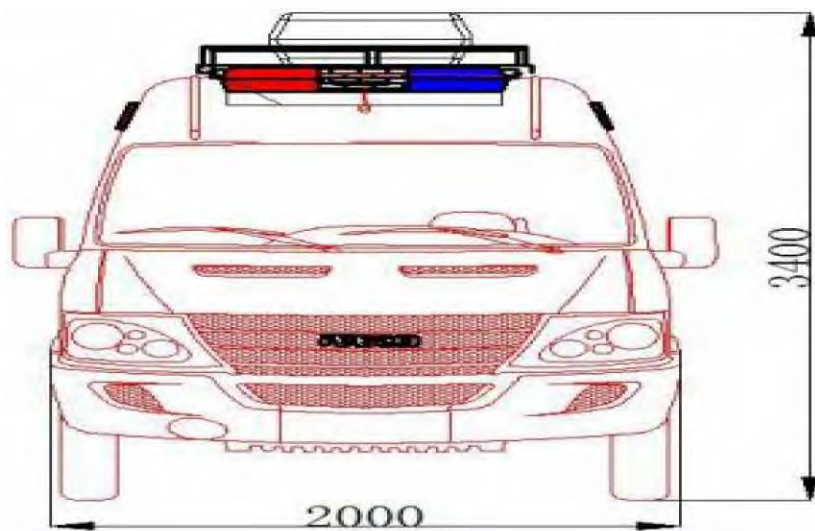
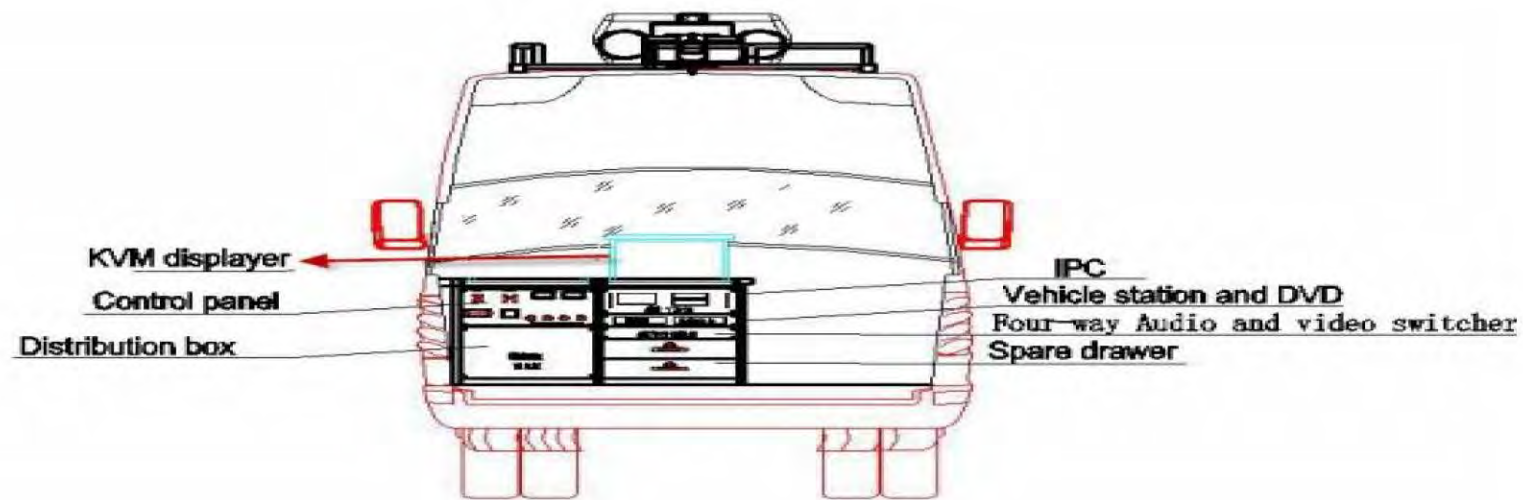
EOD RESPONSE VEHICLE



The vehicle is custom designed as Explosive Ordnance Disposal (EOD) response vehicle and is equipped to carry equipment deemed necessary for Explosive Ordnance Disposal operation.

It is also assumed that EOD vehicle has the following function: alarm, illumination, power supply, towing bomb container trailer.





EOD RESPONSE TRUCK

1. TECHNICAL DATA

Vehicle parameters

Chassis: HOWO (Right Steering Wheel)

Vehicle Dimensions: 7545 mm × 2500 mm × 3800 mm

Cabinet dimension: 5220 mm × 2380 mm × 3000 mm

Max gross vehicle weight: 12.49 T

Empty weight: 8.62 T

Maximum load weight: 3.87 T

Wheel base: 4200 mm

Near corner: 27 °

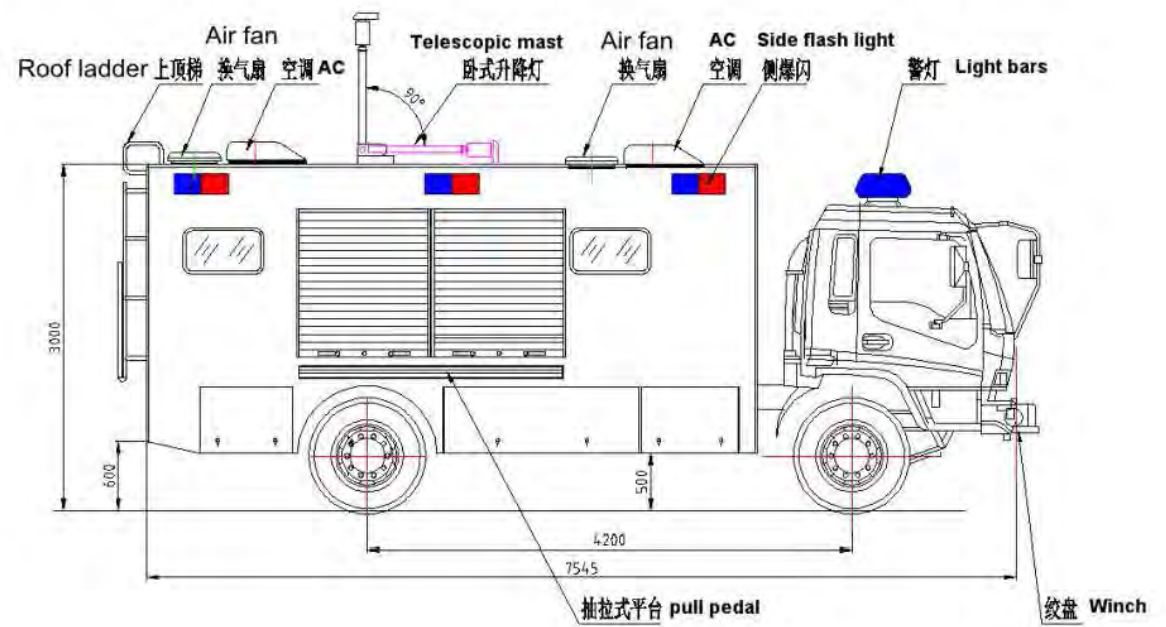
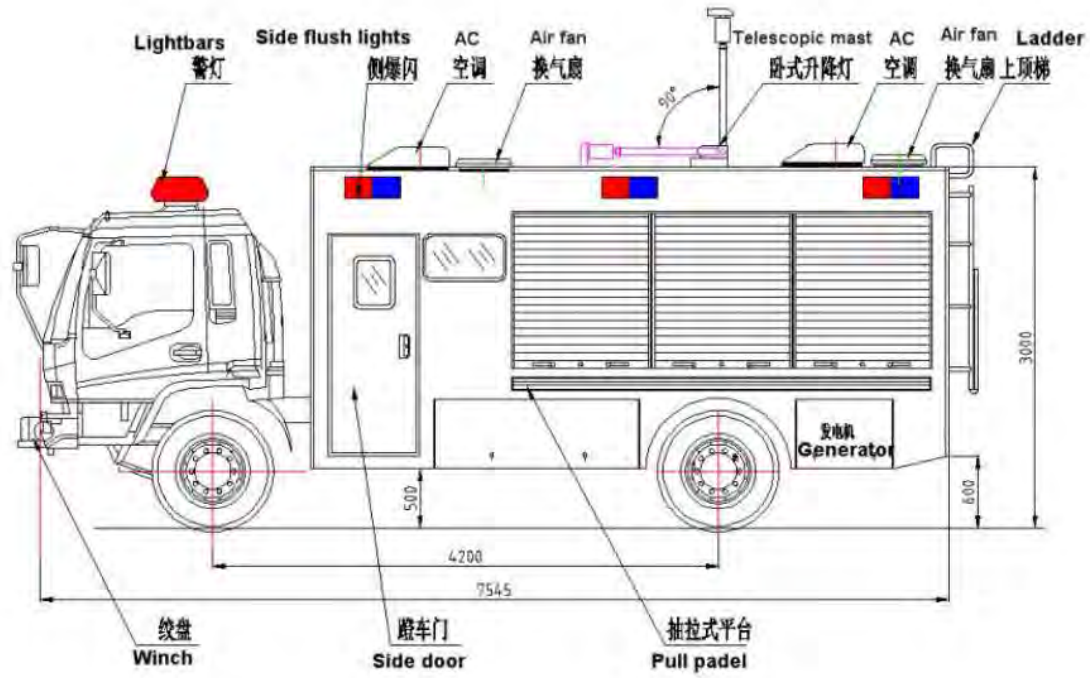
Departure angle: 15 °

Max speed: 90 km/h

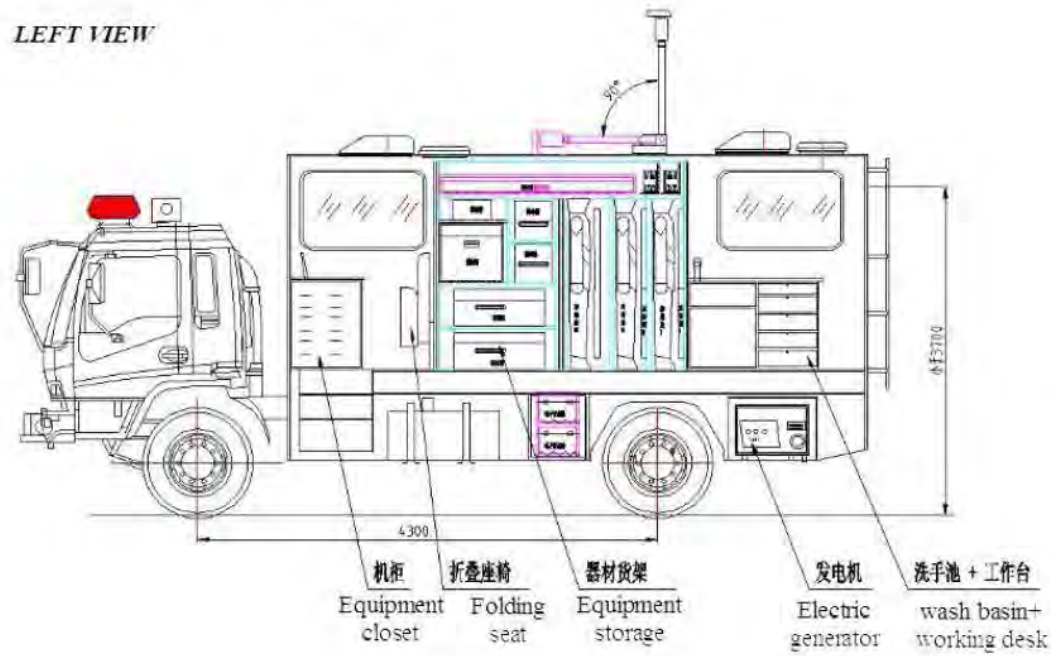
External power source: DC220V 16A

Power output socket: DC220V 16A×1 10A×1

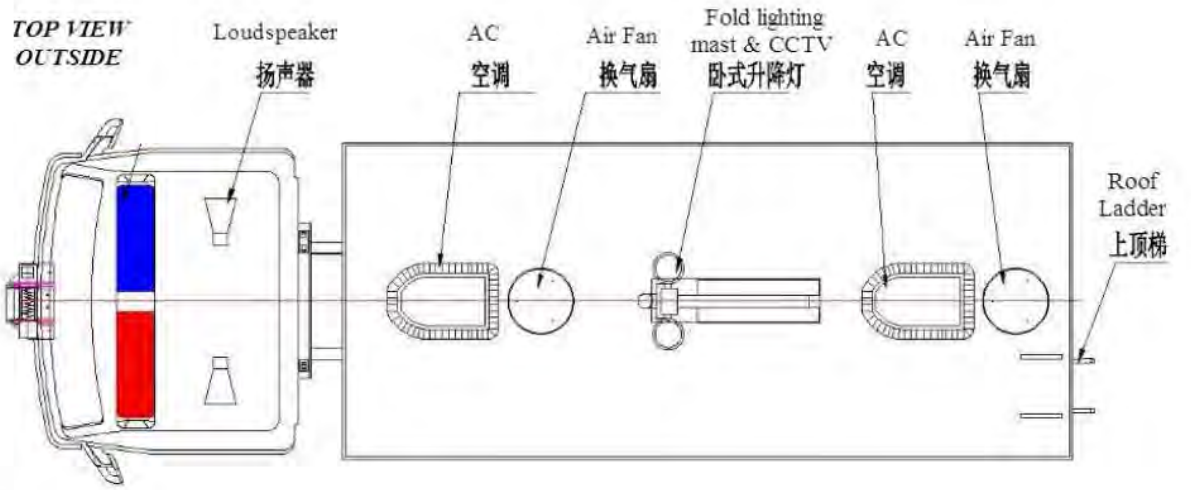


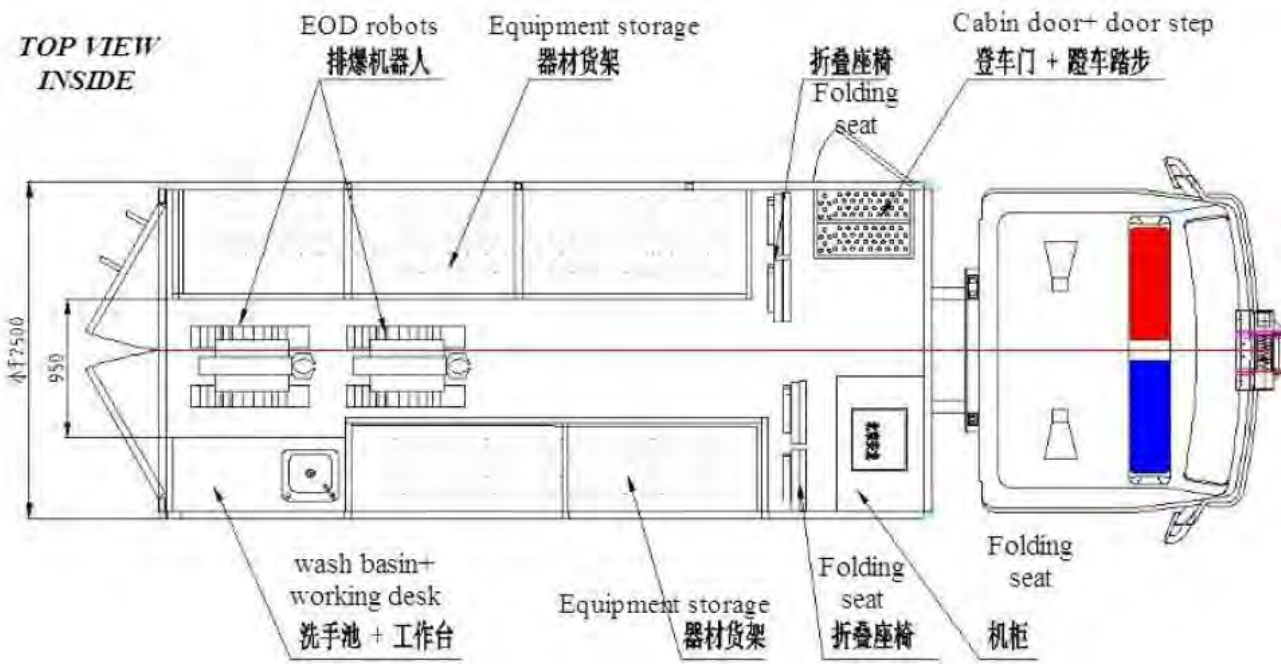


LEFT VIEW



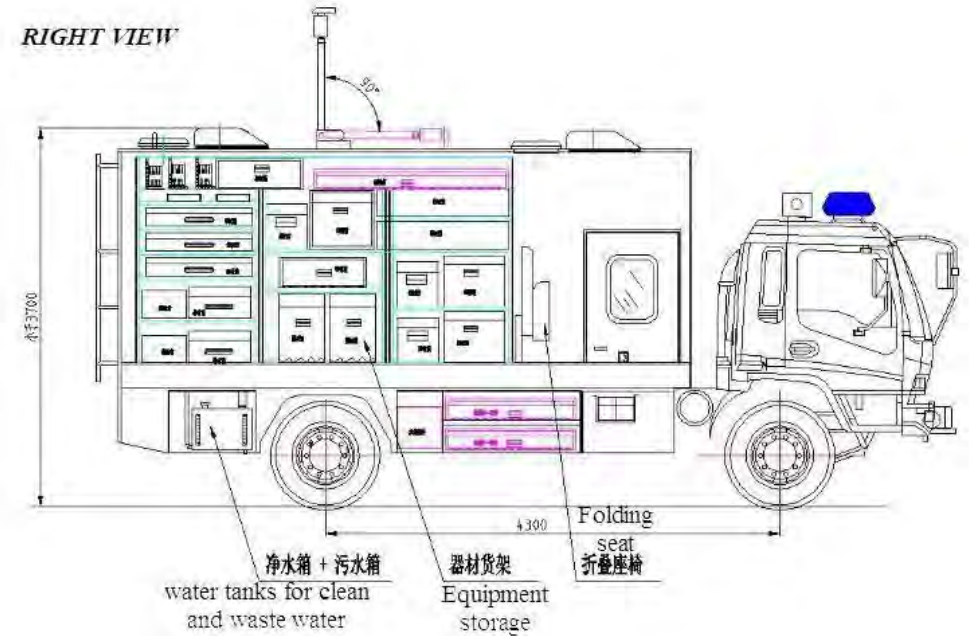
TOP VIEW
OUTSIDE





TYPICAL EQUIPMENT CONFIGURATION

- (1) 1 unit EOD robot (2) 1 unit EOD ROBOT
- (3) 2 unit Bomb Disposal Suit
(include the cooling suit)
- (4) 1 unit Portable X-ray Scanning System
- (5) 2 unit Non-linear Junction Detector
- (6) 2 unit Cable Detector
- (7) 2 unit Multi Sensors Detector



TYPICAL EQUIPMENT CONFIGURATION

- (8) 1 unit Telescopic Manipulator
- (9) 1 unit Portable jammer
- (10) 1 unit Disruptor (11) 1 unit Hook&line
- (12) 1 unit Non-magnetic
- (13) 1 unit Portable tactical endoscope
- (14) 2 unit Handheld Explosive Detector
- (15) 1 unit Fragmentation Shield
- (16) 1 unit Bomb container trailer