



20 MW DIESEL POWER PLANT





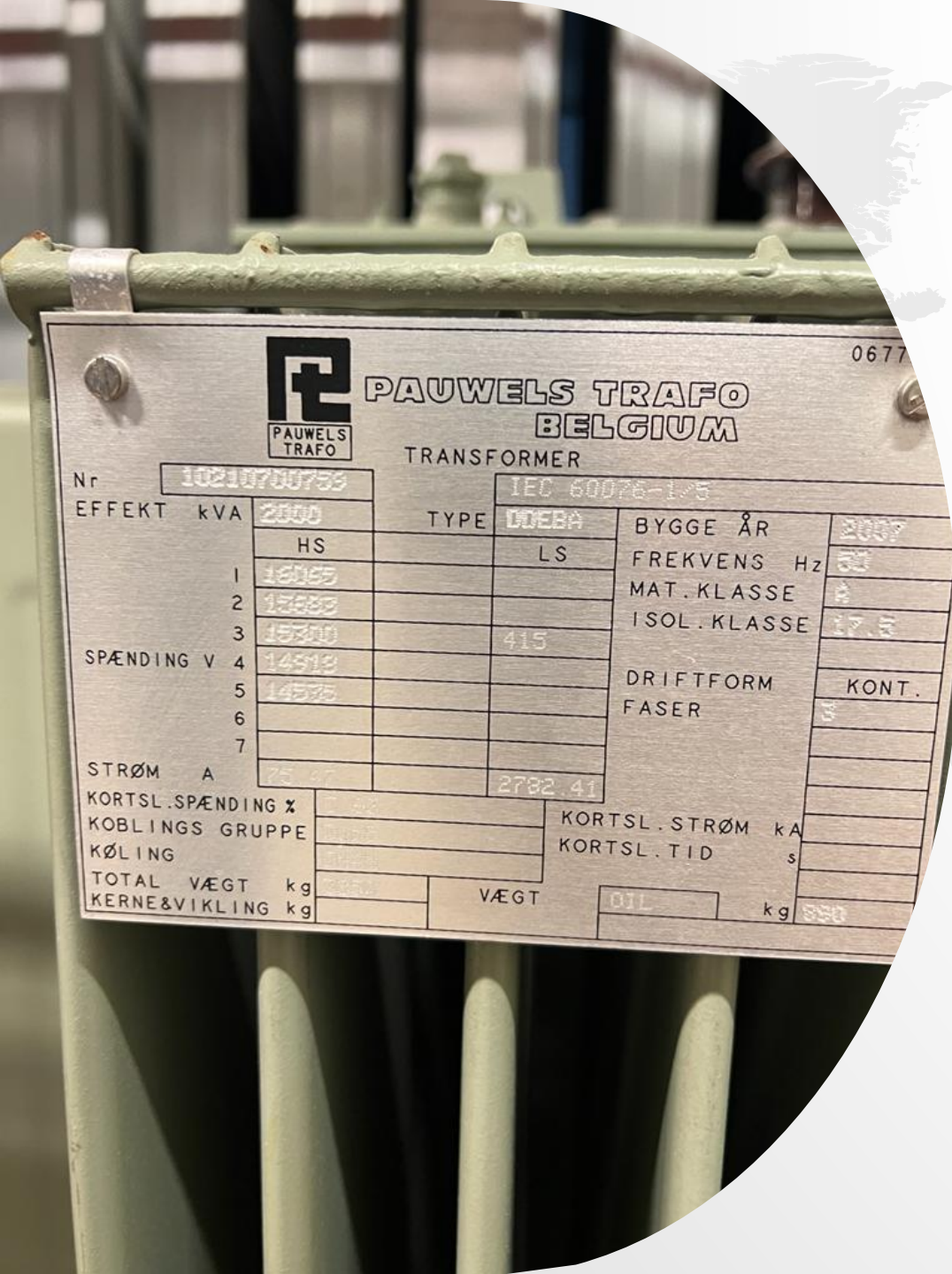
THE POWER PLANT CONSISTS OF 12 PIECES FG WILSON DIESEL GENERATORS WITH 1.7 MW EACH .

FG Wilson P2200 E

Manufacturer	Perkins (United Kingdom GB)
Model	Perkins 4016TAG2A (V16 Diesel)
Power	1,7 MW / 1828 KVA – 2000 KVA Prime
Engine Speed	1500 U/Min.
Frequency	50 Hz
Voltage	240/415 Volt 230/400 Volt
Phase	3 Phases
Alternator	Leroy Somer
Model	LL9124L



Year of construction : 2007
Running hours : between 60 & 200 hours
Condition : Like new
Tested once a month



**PAUWELS TRAF0
BELGIUM**

0677

TRANSFORMER

Nr	10210700759		IEC 60076-1/5		0677
EFFEKT kVA	2000	TYPE	DOEBA	BYGGE ÅR	2007
	HS		LS	FREKVENS Hz	50
1	15000			MAT. KLASSE	A
2	15000			ISOL. KLASSE	17.5
3	15000	415		DRIFTFORM	KONT.
SPENDING V 4	14513			FASER	3
5	14575				
6					
7					
STRØM A	75.47		2792.41		
KORTSL.SPENDING %				KORTSL.STRØM kA	
KOBLINGS GRUPPE				KORTSL.TID s	
KØLING					
TOTAL VÆGT kg		VÆGT	OIL	kg	350
KERNE&VIKLING kg					



**12 X TRANSFORMERS
PAUWELS TRAF0 BELGIUM
POWER : 2000 KVA
LS : 415 VOLT - HS : 15000 VOLT
YEAR : 2007 - FREQUENCY : 50 HZ**



PLC Cabinet

+

**12 x Protection Relay
Systems for the
Gensets**

(VAMP 230)

+

**2 x Protection Relays
Systems for the Grid**

(VAMP 230)

**12 x Switch gears
(automatic circuit Breakers)
LKE Medium Voltage Systems**





**CONTROL SYSTEMS
MANUFACTURER : WOODWARD
MODEL : EGCP-2 DIGITAL CONTROL
AUTOMATIC - MANUELL OPERATION
WITH SYNCHRONISATION**

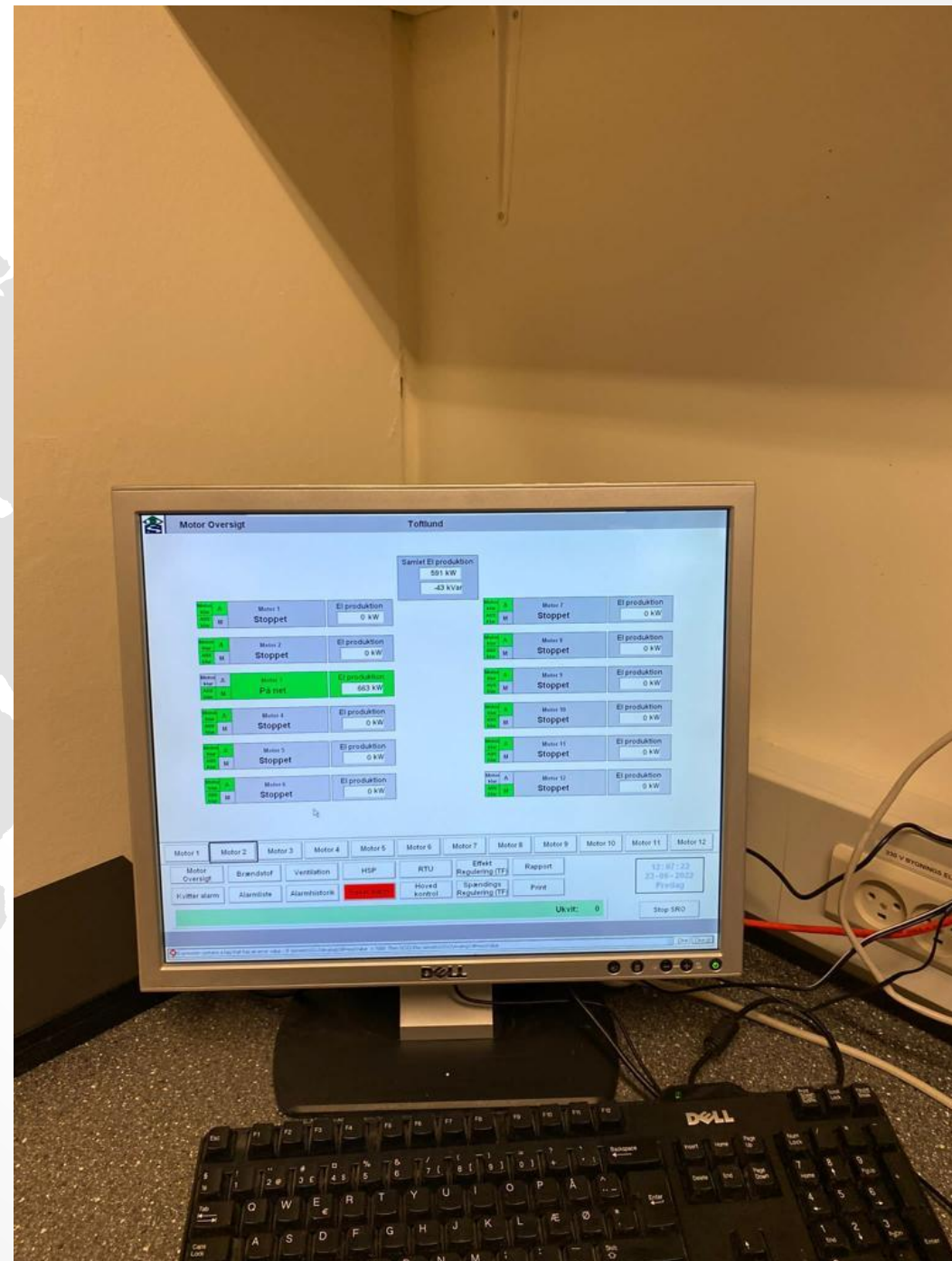
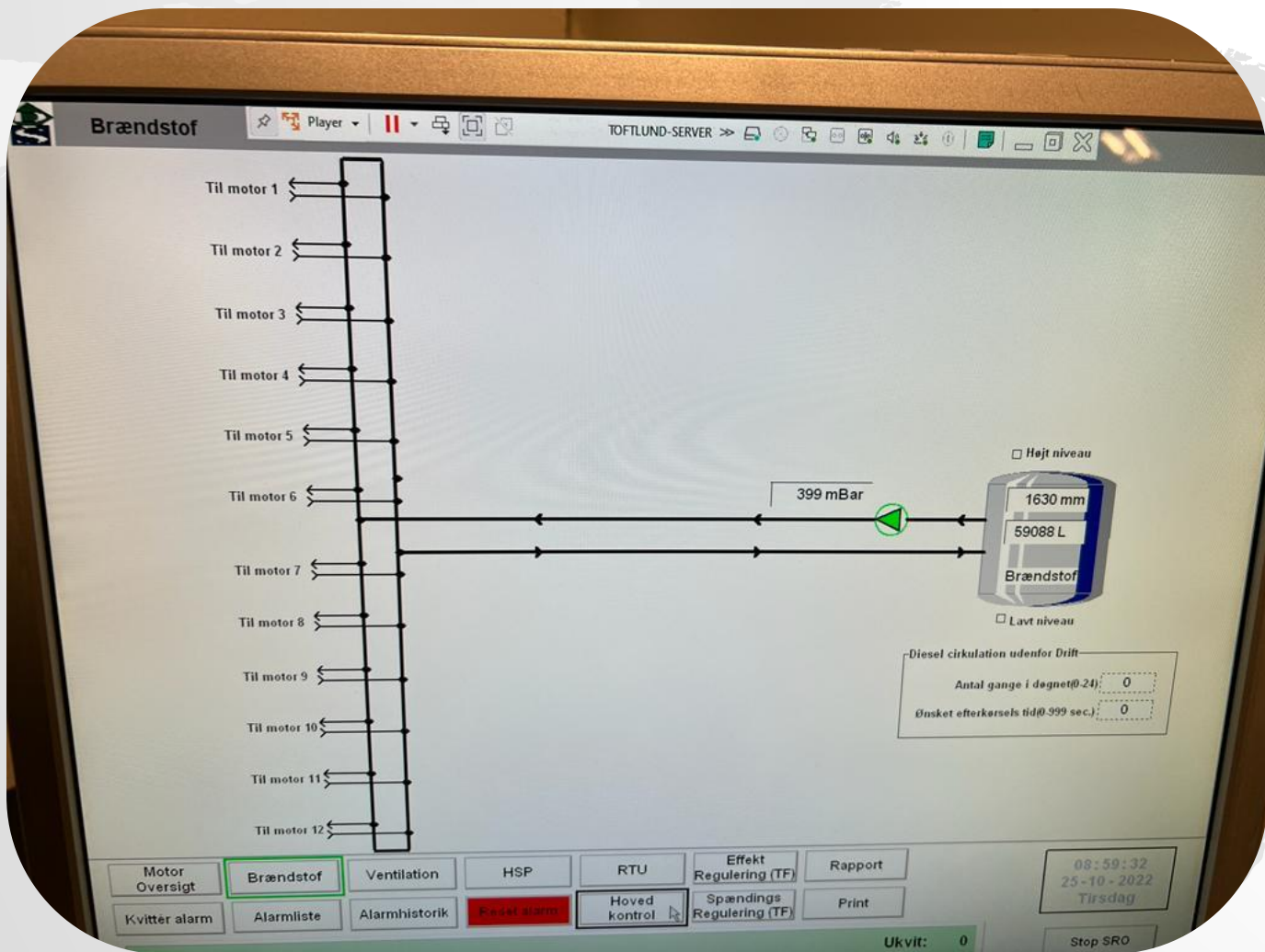


**UPS SYSTEM
PC, MONITOR, MOUSE & KEYBOARD
FOR THE CONTROL ROOM**



**FUEL TANK
DOUBLE-WALLED
CAPACITY : 100.000 LITER
INCL. FUEL LEAK SENSORS**













Building of the Power Plant



Building of the Power Plant